

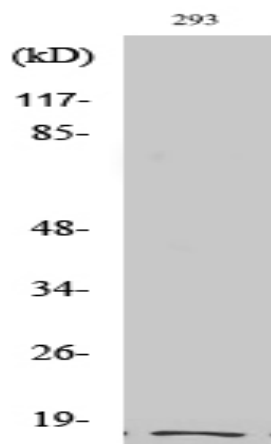
Cleaved-Integrin α 5 LC (E895) Polyclonal Antibody

Catalog No :	YC0089
Reactivity :	Human;Rat;Mouse;
Applications :	WB;ELISA
Target :	Integrin α 5
Fields :	>>Phagosome;>>PI3K-Akt signaling pathway;>>Focal adhesion;>>ECM-receptor interaction;>>Hematopoietic cell lineage;>>Regulation of actin cytoskeleton;>>Bacterial invasion of epithelial cells;>>Shigellosis;>>Pertussis;>>Yersinia infection;>>Human papillomavirus infection;>>Herpes simplex virus 1 infection;>>Proteoglycans in cancer;>>MicroRNAs in cancer;>>Hypertrophic cardiomyopathy;>>Arrhythmogenic right ventricular cardiomyopathy;>>Dilated cardiomyopathy
Gene Name :	ITGA5
Protein Name :	Integrin alpha-5
Human Gene Id :	3678
Human Swiss Prot No :	P08648
Mouse Swiss Prot No :	P11688
Immunogen :	The antiserum was produced against synthesized peptide derived from human ITGA5. AA range:876-925
Specificity :	Cleaved-Integrin α 5 LC (E895) Polyclonal Antibody detects endogenous levels of fragment of activated Integrin α 5 LC protein resulting from cleavage adjacent to E895.
Formulation :	Liquid in PBS containing 50% glycerol, 0.5% BSA and 0.02% sodium azide.
Source :	Polyclonal, Rabbit,IgG
Dilution :	WB 1:500 - 1:2000. ELISA: 1:20000. Not yet tested in other applications.

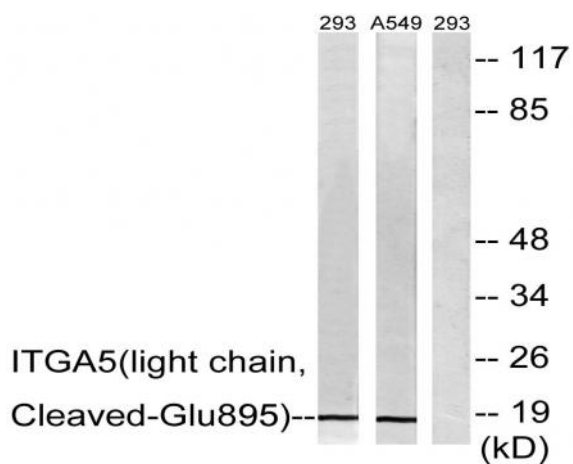
Purification :	The antibody was affinity-purified from rabbit antiserum by affinity-chromatography using epitope-specific immunogen.
Concentration :	1 mg/ml
Storage Stability :	-15°C to -25°C/1 year(Do not lower than -25°C)
Observed Band :	18kD
Cell Pathway :	Focal adhesion;ECM-receptor interaction;Hematopoietic cell lineage;Regulates Actin and Cytoskeleton;Hypertrophic cardiomyopathy (HCM);Arrhythmogenic right ventricular cardiomyopathy (ARVC);Dilated car
Background :	integrin subunit alpha 5(ITGA5) Homo sapiens The product of this gene belongs to the integrin alpha chain family. Integrins are heterodimeric integral membrane proteins composed of an alpha subunit and a beta subunit that function in cell surface adhesion and signaling. The encoded preproprotein is proteolytically processed to generate light and heavy chains that comprise the alpha 5 subunit. This subunit associates with the beta 1 subunit to form a fibronectin receptor. This integrin may promote tumor invasion, and higher expression of this gene may be correlated with shorter survival time in lung cancer patients. Note that the integrin alpha 5 and integrin alpha V subunits are encoded by distinct genes. [provided by RefSeq, Oct 2015],
Function :	function:Integrin alpha-5/beta-1 is a receptor for fibronectin and fibrinogen. It recognizes the sequence R-G-D in its ligands. In case of HIV-1 infection, the interaction with extracellular viral Tat protein seems to enhance angiogenesis in Kaposi's sarcoma lesions.,similarity:Belongs to the integrin alpha chain family.,similarity:Contains 7 FG-GAP repeats.,subunit:Heterodimer of an alpha and a beta subunit. The alpha subunit is composed of an heavy and a light chain linked by a disulfide bond. Alpha-5 associates with beta-1. Interacts with HPS5 and NISCH. Interacts with HIV-1 Tat. Interacts with RAB21.,
Subcellular Location :	Membrane; Single-pass type I membrane protein. Cell junction, focal adhesion . Cell surface .
Expression :	Liver,Placenta,
Tag :	orthogonal
Sort :	4215
No4 :	1
Host :	Rabbit

Modifications : Unmodified

Products Images



Western Blot analysis of various cells using Cleaved-Integrin α5 LC (E895) Polyclonal Antibody



Western blot analysis of lysates from 293 and A549 cells, treated with etoposide 25uM 1h, using ITGA5 (light chain, Cleaved-Glu895) Antibody. The lane on the right is blocked with the synthesized peptide.