

Cleaved-SUMO-2/3 (G93) Polyclonal Antibody

Catalog No :	YC0075
Reactivity :	Human;Mouse;Rat
Applications :	WB;ELISA;CoIP
Target :	SUMO-2/3
Fields :	>>Nucleocytoplasmic transport;>>Fluid shear stress and atherosclerosis
Gene Name :	SUMO2 SUMO3
Protein Name :	Small ubiquitin-related modifier 2
Human Gene Id :	6613
Human Swiss Prot No :	P61956/P55854
Mouse Gene Id :	170930
Mouse Swiss Prot No :	P61957
Rat Gene Id :	690244
Rat Swiss Prot No :	P61959
Immunogen :	The antiserum was produced against synthesized peptide derived from human SUMO2/3. AA range:44-93
Specificity :	Cleaved-SUMO-2/3 (G93) Polyclonal Antibody detects endogenous levels of fragment of activated SUMO-2/3 protein resulting from cleavage adjacent to G93.
Formulation :	Liquid in PBS containing 50% glycerol, 0.5% BSA and 0.02% sodium azide.
Source :	Polyclonal, Rabbit,IgG
Dilution :	WB 1:500 - 1:2000. ELISA: 1:20000. IP 1:50-100 Not yet tested in other applications.

Purification : The antibody was affinity-purified from rabbit antiserum by affinity-chromatography using epitope-specific immunogen.

Concentration : 1 mg/ml

Storage Stability : -15°C to -25°C/1 year(Do not lower than -25°C)

Observed Band : 11kD

Background : This gene encodes a protein that is a member of the SUMO (small ubiquitin-like modifier) protein family. It functions in a manner similar to ubiquitin in that it is bound to target proteins as part of a post-translational modification system. However, unlike ubiquitin which targets proteins for degradation, this protein is involved in a variety of cellular processes, such as nuclear transport, transcriptional regulation, apoptosis, and protein stability. It is not active until the last two amino acids of the carboxy-terminus have been cleaved off. Numerous pseudogenes have been reported for this gene. Alternate transcriptional splice variants, encoding different isoforms, have been characterized. [provided by RefSeq, Jul 2008],

Function : function:Ubiquitin-like protein which can be covalently attached to target lysines either as a monomer or as a lysine-linked polymer. Does not seem to be involved in protein degradation and may function as an antagonist of ubiquitin in the degradation process. Plays a role in a number of cellular processes such as nuclear transport, DNA replication and repair, mitosis and signal transduction. Covalent attachment to its substrates requires prior activation by the E1 complex SAE1-SAE2 and linkage to the E2 enzyme UBE2I, and can be promoted by an E3 ligase such as PIAS1-4, RANBP2 or CBX4.,online information:SUMO protein entry,PTM: Cleavage of precursor form by SENP1 or SENP2 is necessary for function.,PTM: Cleavage of precursor form by SENP1, SENP2 or SENP5 is necessary for function.,PTM: Polymeric chains can be formed through Lys-11 cross-linking.,similarity: Belongs to the ubiquitin family. S

Subcellular Location : Nucleus. Nucleus, PML body.

Expression : Broadly expressed.

Tag : orthogonal,ip

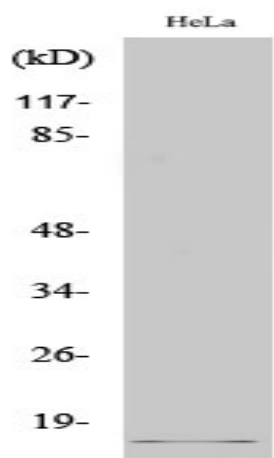
Sort : 4263

No4 : 1

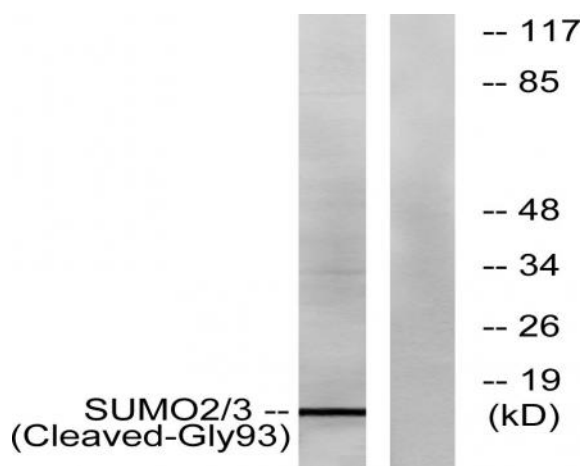
Host : Rabbit

Modifications : Unmodified

Products Images



Western Blot analysis of various cells using Cleaved-SUMO-2/3 (G93) Polyclonal Antibody



Western blot analysis of lysates from HeLa cells, using SUMO2/3 (Cleaved-Gly93) Antibody. The lane on the right is blocked with the synthesized peptide.