

## Cathepsin H Polyclonal Antibody

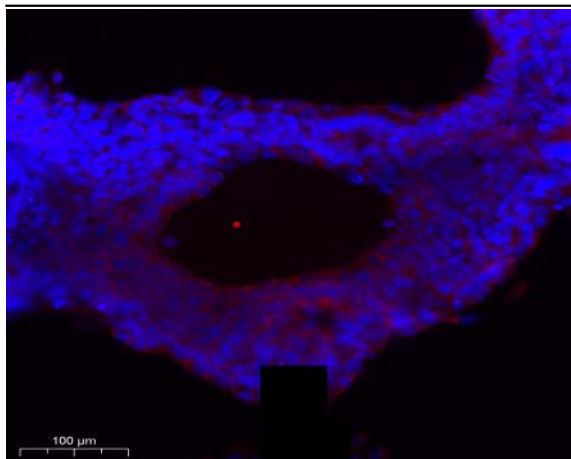
<b>Catalog No :</b>	YC0040
<b>Reactivity :</b>	Human;Rat;Mouse;
<b>Applications :</b>	WB;IHC;IF;ELISA
<b>Target :</b>	Cathepsin H
<b>Fields :</b>	>>Lysosome;>>Apoptosis
<b>Gene Name :</b>	CTSH
<b>Protein Name :</b>	Pro-cathepsin H
<b>Human Gene Id :</b>	1512
<b>Human Swiss Prot No :</b>	P09668
<b>Mouse Swiss Prot No :</b>	P49935
<b>Immunogen :</b>	Synthesized peptide derived from Cathepsin H . at AA range: 70-150
<b>Specificity :</b>	Cathepsin H Polyclonal Antibody detects endogenous levels of Cathepsin H protein.
<b>Formulation :</b>	Liquid in PBS containing 50% glycerol, 0.5% BSA and 0.02% sodium azide.
<b>Source :</b>	Polyclonal, Rabbit,IgG
<b>Dilution :</b>	WB 1:500 - 1:2000. ELISA: 1:20000.. IF 1:50-200
<b>Purification :</b>	The antibody was affinity-purified from rabbit antiserum by affinity-chromatography using epitope-specific immunogen.
<b>Concentration :</b>	1 mg/ml
<b>Storage Stability :</b>	-15°C to -25°C/1 year(Do not lower than -25°C)

---

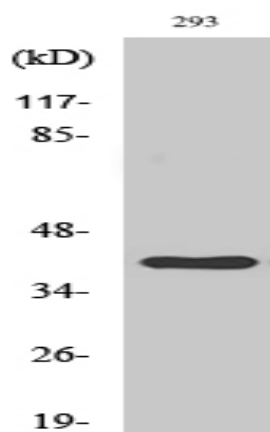
<b>Observed Band :</b>	40kD
<b>Cell Pathway :</b>	Lysosome;
<b>Background :</b>	<p>The protein encoded by this gene is a lysosomal cysteine proteinase important in the overall degradation of lysosomal proteins. It is composed of a dimer of disulfide-linked heavy and light chains, both produced from a single protein precursor. The encoded protein, which belongs to the peptidase C1 protein family, can act both as an aminopeptidase and as an endopeptidase. Increased expression of this gene has been correlated with malignant progression of prostate tumors. Alternate splicing of this gene results in multiple transcript variants encoding different isoforms. [provided by RefSeq, Jan 2016],</p>
<b>Function :</b>	<p>catalytic activity:Hydrolysis of proteins, acting as an aminopeptidase (notably, cleaving Arg- -Xaa bonds) as well as an endopeptidase.,function:Important for the overall degradation of proteins in lysosomes.,similarity:Belongs to the peptidase C1 family.,subunit:Composed of a mini chain and a large chain. The large chain may be split into heavy and light chain. All chains are held together by disulfide bonds.,</p>
<b>Subcellular Location :</b>	Lysosome.
<b>Expression :</b>	Cartilage, Eye, Kidney, Liver, Lung, Salivary gland,
<b>Sort :</b>	3222
<b>No4 :</b>	1
<b>Host :</b>	Rabbit
<b>Modifications :</b>	Unmodified

---

## Products Images



Immunofluorescence analysis of Caco2 cell. 1, primary Antibody was diluted at 1:100(4°C overnight). 2, Goat Anti Rabbit IgG (H&L) - AFfluor 594 Secondary antibody(catalog No: RS3611) was diluted at 1:500(room temperature, 50min).



Western Blot analysis of various cells using Cathepsin H Polyclonal Antibody