

PRSS8 (heavy chain, Cleaved-Ile45) rabbit pAb

Catalog No :	YC0206
Reactivity :	Human;Mouse;Rat
Applications :	WB;IHC
Target :	PRSS8
Gene Name :	PRSS8
Protein Name :	PRSS8 (heavy chain, Cleaved-Ile45)
Human Gene Id :	5652
Human Swiss Prot No :	Q16651
Mouse Swiss Prot No :	Q9ESD1
Rat Gene Id :	192107
Rat Swiss Prot No :	Q9ES87
Immunogen :	Synthesized peptide derived from human PRSS8 (heavy chain, Cleaved-Ile45)
Specificity :	This antibody detects endogenous levels of Human,Mouse,Rat PRSS8 (heavy chain, Cleaved-Ile45, protein was cleaved amino acid sequence between 44-45)
Formulation :	Liquid in PBS containing 50% glycerol, 0.5% BSA and 0.02% sodium azide.
Source :	Polyclonal, Rabbit,IgG
Dilution :	WB 1:500-2000;IHC 1:50-300
Purification :	The antibody was affinity-purified from rabbit serum by affinity-chromatography using specific immunogen.
Concentration :	1 mg/ml

Storage Stability : -15°C to -25°C/1 year(Do not lower than -25°C)

Observed Band : 32kD

Subcellular Location : [Prostasin]: Cell membrane; Single-pass membrane protein.; [Prostasin light chain]: Secreted, extracellular space. Found in the seminal fluid. Secreted after cleavage of its C-terminus.; [Prostasin heavy chain]: Secreted, extracellular space. Found in the seminal fluid. Secreted after cleavage of its C-terminus.

Expression : Found in prostate, liver, salivary gland, kidney, lung, pancreas, colon, bronchus and renal proximal tubular cells. In the prostate gland it may be synthesized in epithelial cells, secreted into the ducts, and excreted into the seminal fluid.

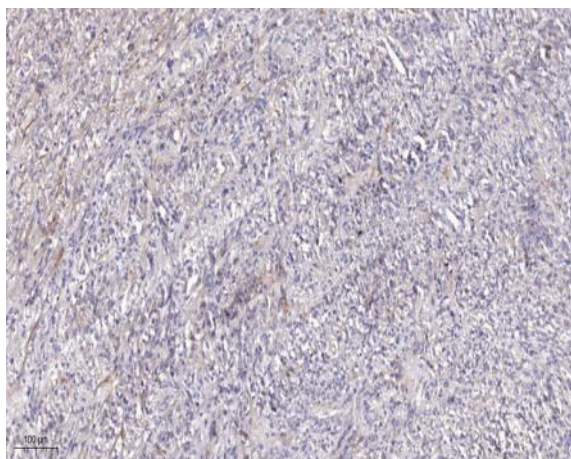
Sort : 13088

No4 : 1

Host : Rabbit

Modifications : Unmodified

Products Images



Immunohistochemical analysis of paraffin-embedded human Colon cancer. 1, Antibody was diluted at 1:200(4° overnight). 2, Tris-EDTA,pH9.0 was used for antigen retrieval. 3,Secondary antibody was diluted at 1:200(room temperature, 45min).