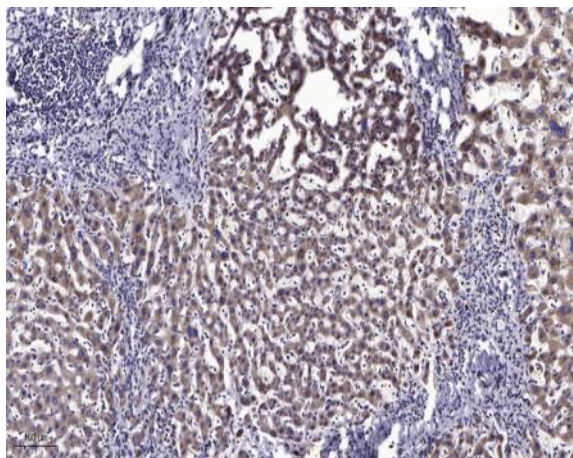


**MCFD2 (Cleaved-Glu27) rabbit pAb**

<b>Catalog No :</b>	YC0197
<b>Reactivity :</b>	Human;Mouse;Rat
<b>Applications :</b>	WB;IHC
<b>Target :</b>	MCFD2
<b>Gene Name :</b>	MCFD2 SDNSF
<b>Protein Name :</b>	MCFD2 (Cleaved-Glu27)
<b>Human Gene Id :</b>	90411
<b>Human Swiss Prot No :</b>	Q8NI22
<b>Mouse Gene Id :</b>	193813
<b>Mouse Swiss Prot No :</b>	Q8K5B2
<b>Rat Gene Id :</b>	246117
<b>Rat Swiss Prot No :</b>	Q8K5B3
<b>Immunogen :</b>	Synthesized peptide derived from human MCFD2 (Cleaved-Glu27)
<b>Specificity :</b>	This antibody detects endogenous levels of Human,Mouse,Rat MCFD2 (Cleaved-Glu27, protein was cleaved amino acid sequence between 26-27 )
<b>Formulation :</b>	Liquid in PBS containing 50% glycerol, 0.5% BSA and 0.02% sodium azide.
<b>Source :</b>	Polyclonal, Rabbit,IgG
<b>Dilution :</b>	WB 1:500-2000;IHC 1:50-300
<b>Purification :</b>	The antibody was affinity-purified from rabbit serum by affinity-chromatography using specific immunogen.

<b>Concentration :</b>	1 mg/ml
<b>Storage Stability :</b>	-15°C to -25°C/1 year(Do not lower than -25°C)
<b>Observed Band :</b>	14 16kD
<b>Subcellular Location :</b>	Endoplasmic reticulum-Golgi intermediate compartment . Endoplasmic reticulum . Golgi apparatus .
<b>Sort :</b>	9445
<b>No4 :</b>	1
<b>Host :</b>	Rabbit
<b>Modifications :</b>	Unmodified

## Products Images



Immunohistochemical analysis of paraffin-embedded human liver cancer. 1, Antibody was diluted at 1:200(4° overnight). 2, Tris-EDTA,pH9.0 was used for antigen retrieval. 3,Secondary antibody was diluted at 1:200(room temperature, 45min).