

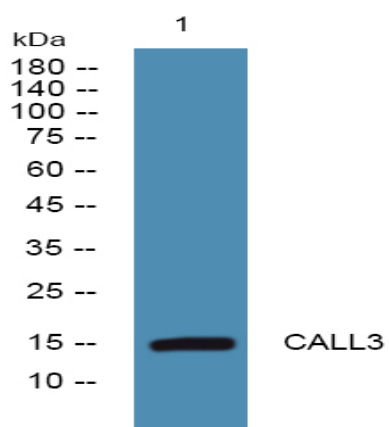
CALL3 Polyclonal Antibody

Catalog No :	YN0534
Reactivity :	Human;Mouse;Rat
Applications :	WB;ELISA
Target :	CALL3
Fields :	>>Ras signaling pathway;>>Rap1 signaling pathway;>>Calcium signaling pathway;>>cGMP-PKG signaling pathway;>>cAMP signaling pathway;>>Phosphatidylinositol signaling system;>>Oocyte meiosis;>>Cellular senescence;>>Adrenergic signaling in cardiomyocytes;>>Vascular smooth muscle contraction;>>Apelin signaling pathway;>>C-type lectin receptor signaling pathway;>>Circadian entrainment;>>Long-term potentiation;>>Neurotrophin signaling pathway;>>Dopaminergic synapse;>>Olfactory transduction;>>Phototransduction;>>Inflammatory mediator regulation of TRP channels;>>Insulin signaling pathway;>>GnRH signaling pathway;>>Estrogen signaling pathway;>>Melanogenesis;>>Oxytocin signaling pathway;>>Glucagon signaling pathway;>>Renin secretion;>>Aldosterone synthesis and secretion;>>Salivary secretion;>>Gastric acid secretion;>>Alzheimer disease;>>Parkinson disease;>>Pathways of neurodegeneration - multiple diseases;>>Amphetamine addiction;>>Alcoholism;>>Pertussis;>>Tuberculosis;>>Human cytomegalovirus inf
Gene Name :	CALML3
Protein Name :	Calmodulin-like protein 3 (CaM-like protein) (CLP) (Calmodulin-related protein NB-1)
Human Gene Id :	810
Human Swiss Prot No :	P27482
Mouse Swiss Prot No :	Q9D6P8
Rat Swiss Prot No :	Q5U206
Immunogen :	Synthesized peptide derived from part region of human protein

Specificity :	CALL3 Polyclonal Antibody detects endogenous levels of protein.
Formulation :	Liquid in PBS containing 50% glycerol, and 0.02% sodium azide.
Source :	Polyclonal, Rabbit,IgG
Dilution :	WB 1:500-2000 ELISA 1:5000-20000
Purification :	The antibody was affinity-purified from rabbit antiserum by affinity-chromatography using epitope-specific immunogen.
Concentration :	1 mg/ml
Storage Stability :	-15°C to -25°C/1 year(Do not lower than -25°C)
Observed Band :	16kD
Cell Pathway :	Calcium;Phosphatidylinositol signaling system;Oocyte meiosis;Vascular smooth muscle contraction;Long-term potentiation;Neurotrophin;Olfactory transduction;Insulin_Receptor;GnRH;Melanogenesis;Alzheimer
Background :	function:May be similar to that of authentic calmodulin and may actually compete with calmodulin by binding, with different affinities, to cellular substrates.,induction:By human beta type transforming growth factor.,miscellaneous:Binds four calcium ions.,similarity:Belongs to the calmodulin family.,similarity:Contains 4 EF-hand domains.,tissue specificity:Expressed in normal mammary, prostate, cervical, and epidermal tissues. It is greatly reduced or undetectable in transformed cells.,
Function :	function:May be similar to that of authentic calmodulin and may actually compete with calmodulin by binding, with different affinities, to cellular substrates.,induction:By human beta type transforming growth factor.,miscellaneous:Binds four calcium ions.,similarity:Belongs to the calmodulin family.,similarity:Contains 4 EF-hand domains.,tissue specificity:Expressed in normal mammary, prostate, cervical, and epidermal tissues. It is greatly reduced or undetectable in transformed cells.,
Subcellular Location :	extracellular exosome,
Expression :	Expressed in normal mammary, prostate, cervical, and epidermal tissues. It is greatly reduced or undetectable in transformed cells.
Sort :	18188
No4 :	1

Host : Rabbit**Modifications :** Unmodified

Products Images



Western blot analysis of lysates from PC12 cells, primary antibody was diluted at 1:1000, 4° over night