

**Kallikrein-4 (Cleaved-Ile31) rabbit pAb**

<b>Catalog No :</b>	YC0181
<b>Reactivity :</b>	Human;Rat;Mouse;
<b>Applications :</b>	WB;IHC
<b>Target :</b>	KLK4
<b>Gene Name :</b>	KLK4 EMSP1 PRSS17 PSTS
<b>Protein Name :</b>	Kallikrein-4 (Cleaved-Ile31)
<b>Human Gene Id :</b>	9622
<b>Human Swiss Prot No :</b>	Q9Y5K2
<b>Immunogen :</b>	Synthesized peptide derived from human Kallikrein-4 (Cleaved-Ile31)
<b>Specificity :</b>	This antibody detects endogenous levels of Human Kallikrein-4 (Cleaved-Ile31, protein was cleaved amino acid sequence between 30-31 )
<b>Formulation :</b>	Liquid in PBS containing 50% glycerol, 0.5% BSA and 0.02% sodium azide.
<b>Source :</b>	Polyclonal, Rabbit,IgG
<b>Dilution :</b>	WB 1:500-2000;IHC 1:50-300
<b>Purification :</b>	The antibody was affinity-purified from rabbit serum by affinity-chromatography using specific immunogen.
<b>Concentration :</b>	1 mg/ml
<b>Storage Stability :</b>	-15°C to -25°C/1 year(Do not lower than -25°C)
<b>Observed Band :</b>	25kD
<b>Subcellular Location :</b>	Secreted.

**Expression :** Expressed in prostate.

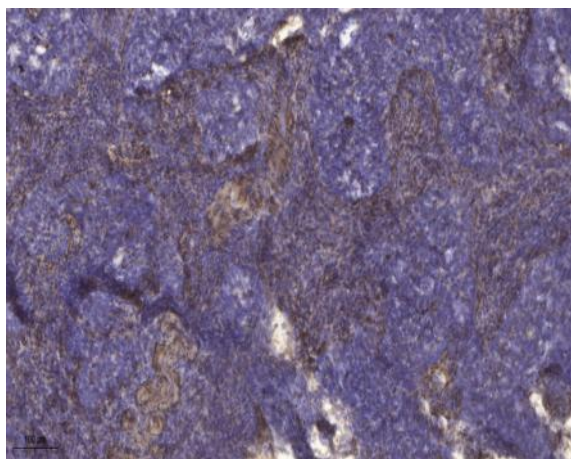
**Sort :** 8832

**No4 :** 1

**Host :** Rabbit

**Modifications :** Unmodified

## Products Images



Immunohistochemical analysis of paraffin-embedded human cervical carcinoma. 1, Antibody was diluted at 1:200(4° overnight). 2, Tris-EDTA,pH9.0 was used for antigen retrieval. 3,Secondary antibody was diluted at 1:200(room temperature, 45min).