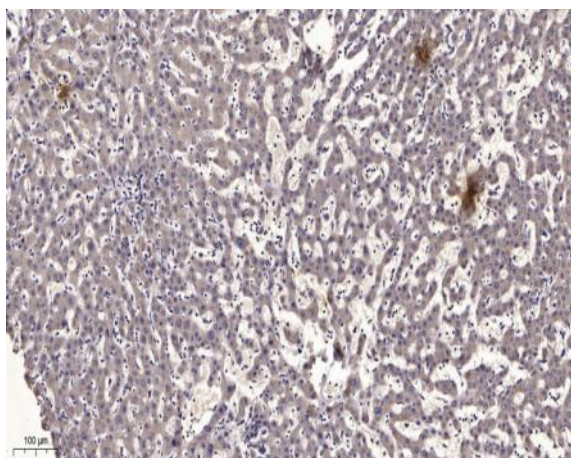


Kallikrein-14 (Cleaved-Ile25) rabbit pAb

Catalog No :	YC0179
Reactivity :	Human;Mouse;Rat
Applications :	WB;IHC
Target :	Kallikrein-14
Gene Name :	KLK14 KLKL6
Protein Name :	Kallikrein-14 (Cleaved-Ile25)
Human Gene Id :	43847
Human Swiss Prot No :	Q9P0G3
Mouse Gene Id :	317653
Mouse Swiss Prot No :	Q8CGR5
Immunogen :	Synthesized peptide derived from human Kallikrein-14 (Cleaved-Ile25)
Specificity :	This antibody detects endogenous levels of Human,Mouse,Rat Kallikrein-14 (Cleaved-Ile25, protein was cleaved amino acid sequence between 24-25)
Formulation :	Liquid in PBS containing 50% glycerol, 0.5% BSA and 0.02% sodium azide.
Source :	Polyclonal, Rabbit,IgG
Dilution :	WB 1:500-2000;IHC 1:50-300
Purification :	The antibody was affinity-purified from rabbit serum by affinity-chromatography using specific immunogen.
Concentration :	1 mg/ml
Storage Stability :	-15°C to -25°C/1 year(Do not lower than -25°C)

Observed Band :	26kD
Subcellular Location :	Secreted, extracellular space .
Expression :	Highly expressed in CNS, bone marrow and fetal liver. Also expressed in breast, thyroid, kidney, colon, pancreas, spleen, prostate, uterus, small intestine, placenta and skeletal muscle. Among 40 tissues tested, the highest expression is detected in skin followed by breast and prostate (at protein level). Expressed in stratum corneum by sweat ducts and sweat glands and detected in sweat (at protein level).
Sort :	8831
No4 :	1
Host :	Rabbit
Modifications :	Unmodified

Products Images



Immunohistochemical analysis of paraffin-embedded human liver cancer. 1, Antibody was diluted at 1:200(4° overnight). 2, Tris-EDTA,pH9.0 was used for antigen retrieval. 3,Secondary antibody was diluted at 1:200(room temperature, 45min).