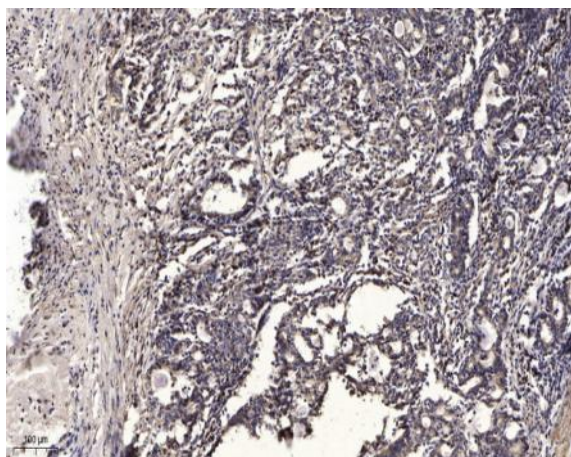


ITIH3 (Cleaved-Asp651) rabbit pAb

Catalog No :	YC0177
Reactivity :	Human;Mouse;Rat
Applications :	WB;ELISA;IHC
Target :	ITIH3
Gene Name :	ITIH3
Protein Name :	ITIH3 (Cleaved-Asp651)
Human Gene Id :	3699
Human Swiss Prot No :	Q06033
Mouse Gene Id :	16426
Mouse Swiss Prot No :	Q61704
Rat Gene Id :	50693
Rat Swiss Prot No :	Q63416
Immunogen :	Synthesized peptide derived from human ITIH3 (Cleaved-Asp651)
Specificity :	This antibody detects endogenous levels of Human,Mouse,Rat ITIH3 (Cleaved-Asp651, protein was cleaved amino acid sequence between 651-652)
Formulation :	Liquid in PBS containing 50% glycerol, 0.5% BSA and 0.02% sodium azide.
Source :	Polyclonal, Rabbit,IgG
Dilution :	WB 1:500-2000;IHC 1:50-300; ELISA 2000-20000
Purification :	The antibody was affinity-purified from rabbit serum by affinity-chromatography using specific immunogen.

Concentration :	1 mg/ml
Storage Stability :	-15°C to -25°C/1 year(Do not lower than -25°C)
Observed Band :	68 95kD
Subcellular Location :	Secreted.
Sort :	8727
No4 :	1
Host :	Rabbit
Modifications :	Unmodified

Products Images



Immunohistochemical analysis of paraffin-embedded human Gastric adenocarcinoma. 1, Antibody was diluted at 1:200(4° overnight). 2, Tris-EDTA,pH9.0 was used for antigen retrieval. 3,Secondary antibody was diluted at 1:200(room temperature, 45min).