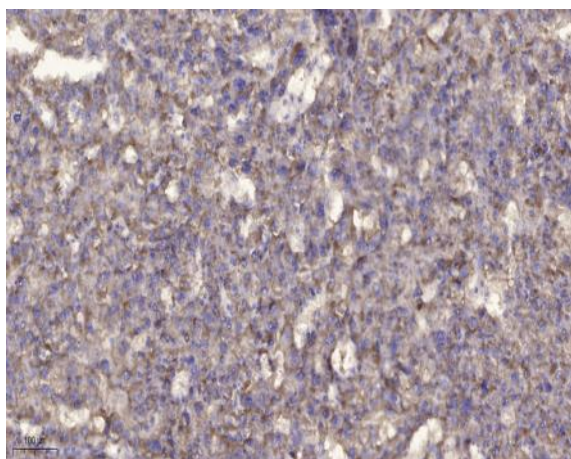


ITGA8 (heavy chain, Cleaved-Arg906) rabbit pAb

Catalog No :	YC0171
Reactivity :	Human;Mouse;Rat
Applications :	WB;IHC
Target :	ITGA8
Fields :	>>PI3K-Akt signaling pathway;>>Focal adhesion;>>ECM-receptor interaction;>>Cell adhesion molecules;>>Regulation of actin cytoskeleton;>>Human papillomavirus infection;>>Hypertrophic cardiomyopathy;>>Arrhythmogenic right ventricular cardiomyopathy;>>Dilated cardiomyopathy
Gene Name :	ITGA8
Protein Name :	ITGA8 (heavy chain, Cleaved-Arg906)
Human Gene Id :	8516
Human Swiss Prot No :	P53708
Mouse Gene Id :	241226
Mouse Swiss Prot No :	A2ARA8
Immunogen :	Synthesized peptide derived from human ITGA8 (heavy chain, Cleaved-Arg906)
Specificity :	This antibody detects endogenous levels of Human,Mouse,Rat ITGA8 (heavy chain, Cleaved-Arg906, protein was cleaved amino acid sequence between 906-907)
Formulation :	Liquid in PBS containing 50% glycerol, 0.5% BSA and 0.02% sodium azide.
Source :	Polyclonal, Rabbit,IgG
Dilution :	WB 1:500-2000;IHC 1:50-300

Purification :	The antibody was affinity-purified from rabbit serum by affinity-chromatography using specific immunogen.
Concentration :	1 mg/ml
Storage Stability :	-15°C to -25°C/1 year(Do not lower than -25°C)
Observed Band :	95 115kD
Subcellular Location :	Membrane ; Single-pass type I membrane protein . Cell membrane .
Expression :	Expressed in mesenchymal cells, including alveolar myofibroblasts, kidney mesangial cells and hepatic stellar cells and vascular and visceral smooth muscle (at protein level).
Sort :	8723
No4 :	1
Host :	Rabbit
Modifications :	Unmodified

Products Images



Immunohistochemical analysis of paraffin-embedded human liver cancer. 1, Antibody was diluted at 1:200(4° overnight). 2, Tris-EDTA,pH9.0 was used for antigen retrieval. 3,Secondary antibody was diluted at 1:200(room temperature, 45min).