

NEUA rabbit pAb

Catalog No :	YT8109
Reactivity :	Human;Mouse;Rat
Applications :	IHC;WB
Target :	CMAS
Gene Name :	CMAS
Protein Name :	N-acylneuraminate cytidyltransferase (EC 2.7.7.43) (CMP-N-acetylneuraminic acid synthase) (CMP-NeuNAc synthase)
Human Gene Id :	55907
Human Swiss Prot No :	Q8NFW8
Mouse Gene Id :	12764
Mouse Swiss Prot No :	Q99KK2
Rat Swiss Prot No :	P69060
Immunogen :	Synthesized peptide derived from human C-terminal NEUA
Specificity :	This antibody detects endogenous levels of NEUA at Human, Mouse,Rat
Formulation :	Liquid in PBS containing 50% glycerol, and 0.02% sodium azide.
Source :	Polyclonal, Rabbit,IgG
Dilution :	WB 1:500-2000 IHC 1:50-200
Purification :	The antibody was affinity-purified from rabbit antiserum by affinity-chromatography using epitope-specific immunogen.
Concentration :	1 mg/ml

Storage Stability : -15°C to -25°C/1 year(Do not lower than -25°C)

Molecularweight : 48kD

Function : Catalyzes the activation of N-acetylneuraminic acid (NeuNAc) to cytidine 5'-monophosphate N-acetylneuraminic acid (CMP-NeuNAc), a substrate required for the addition of sialic acid. Has some activity toward NeuNAc, N-glycolylneuraminic acid (Neu5Gc) or 2-keto-3-deoxy-D-glycero-D-galacto-nononic acid (KDN).

Subcellular Location : Nucleus .

Expression : Ubiquitously expressed. Expressed in pancreas, kidney, liver, skeletal muscle, lung, placenta, brain, heart, colon, PBL, small intestine, ovary, testis, prostate, thymus and spleen.

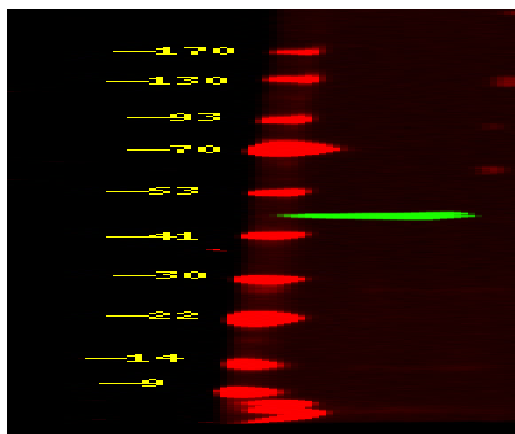
Sort : 999

No4 : 1

Host : Rabbit

Modifications : Unmodified

Products Images



Western Blot analysis of HeLa cell lysis, using primary antibody at 1:1000 dilution. Secondary antibody(catalog#:RS23920) was diluted at 1:10000