

GADL1 rabbit pAb

Catalog No :	YT8100
Reactivity :	Human;Mouse
Applications :	IHC;WB
Target :	GADL1
Gene Name :	GADL1
Protein Name :	Glutamate decarboxylase-like protein 1 (EC 4.1.1.-)
Human Gene Id :	339896
Human Swiss Prot No :	Q6ZQY3
Mouse Gene Id :	73748
Mouse Swiss Prot No :	Q80WP8
Immunogen :	Synthesized peptide derived from human N-terminal GADL1
Specificity :	This antibody detects endogenous levels of GADL1 at Human, Mouse
Formulation :	Liquid in PBS containing 50% glycerol, and 0.02% sodium azide.
Source :	Polyclonal, Rabbit,IgG
Dilution :	WB 1:500-2000 IHC 1:50-200
Purification :	The antibody was affinity-purified from rabbit antiserum by affinity-chromatography using epitope-specific immunogen.
Concentration :	1 mg/ml
Storage Stability :	-15°C to -25°C/1 year(Do not lower than -25°C)

Molecularweight : 57kD

Function : May catalyze the decarboxylation of L-aspartate, 3-sulfinio-L-alanine (cysteine sulfinic acid), and L-cysteate to beta-alanine, hypotaurine and taurine, respectively. Does not exhibit any decarboxylation activity toward glutamate.

Expression : Expressed very weakly in neurons and not detected in astrocytes, brain or liver.

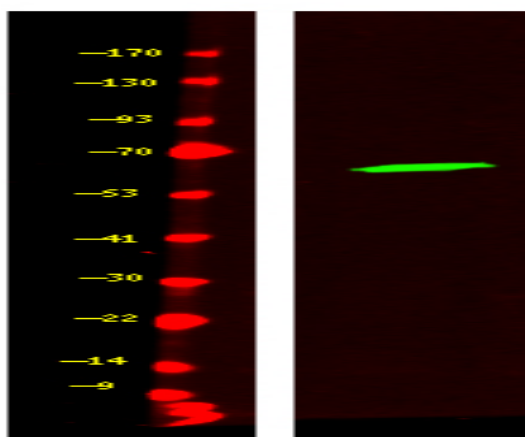
Sort : 999

No4 : 1

Host : Rabbit

Modifications : Unmodified

Products Images



Western Blot analysis of HeLa cell lysis, using primary antibody at 1:1000 dilution. Secondary antibody(catalog#:RS23920) was diluted at 1:10000