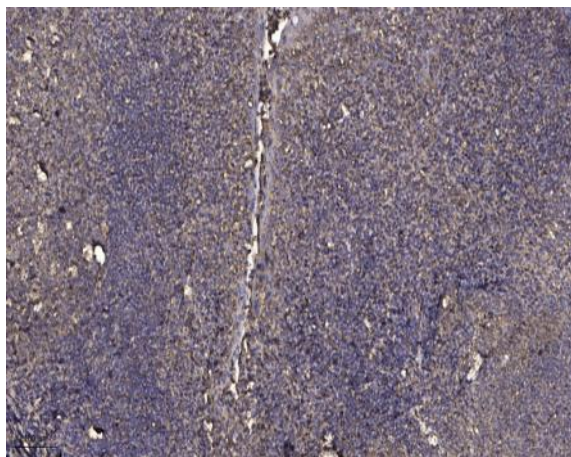


MOTS-C rabbit pAb

Catalog No :	YT8069
Reactivity :	Human;Mouse;Rat
Applications :	IHC
Target :	MOTS-C
Gene Name :	MT-RNR1
Protein Name :	MOTS-C
Human Swiss Prot No :	A0A0C5B5G6
Immunogen :	Synthesized peptide derived from human MOTS-C
Specificity :	This antibody detects endogenous levels of MOTS-C at Human, Mouse,Rat
Formulation :	Liquid in PBS containing 50% glycerol, 0.5% BSA and 0.02% sodium azide.
Source :	Polyclonal, Rabbit,IgG
Dilution :	IHC 1:50-300.
Purification :	The antibody was affinity-purified from rabbit antiserum by affinity-chromatography using epitope-specific immunogen.
Concentration :	1 mg/ml
Storage Stability :	-15°C to -25°C/1 year(Do not lower than -25°C)
Subcellular Location :	Secreted . Mitochondrion . Nucleus . Translocates to the nucleus in response to metabolic stress in an AMPK-dependent manner. .
Expression :	Detected in plasma (at protein level) (PubMed:25738459, PubMed:32182209). Also expressed in skeletal muscle (at protein level) (PubMed:32182209).
Sort :	25140

No4 :	<u>1</u>
Host :	<u>Rabbit</u>
Modifications :	<u>Unmodified</u>

Products Images



Immunohistochemical analysis of paraffin-embedded human tonsil. 1, Antibody was diluted at 1:200(4° overnight). 2, Tris-EDTA,pH9.0 was used for antigen retrieval. 3,Secondary antibody was diluted at 1:200(room temperature, 30min).