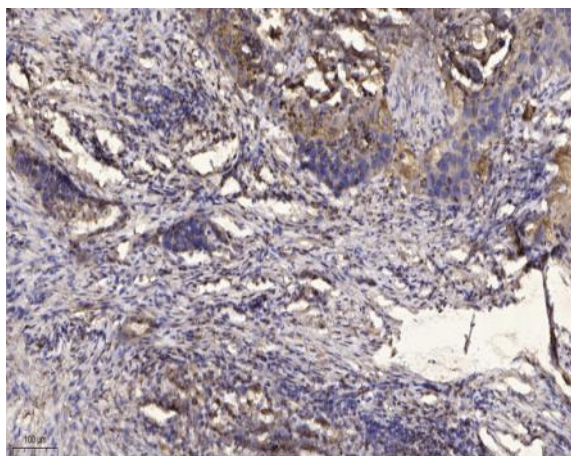


ITIH4 (80k, Cleaved-Arg689) rabbit pAb

Catalog No :	YC0109
Reactivity :	Human;Rat;Mouse;
Applications :	WB;IHC
Target :	ITIH4
Gene Name :	ITIH4 IHRP ITIHL1 PK120 PRO1851
Protein Name :	ITIH4 (80k, Cleaved-Arg689)
Human Gene Id :	3700
Human Swiss Prot No :	Q14624
Immunogen :	Synthesized peptide derived from human ITIH4 (80k, Cleaved-Arg689)
Specificity :	This antibody detects endogenous levels of Human ITIH4 (80k, Cleaved-Arg689)
Formulation :	Liquid in PBS containing 50% glycerol, 0.5% BSA and 0.02% sodium azide.
Source :	Polyclonal, Rabbit,IgG
Dilution :	WB 1:500-2000;IHC 1:50-300
Purification :	The antibody was affinity-purified from rabbit serum by affinity-chromatography using specific immunogen.
Concentration :	1 mg/ml
Storage Stability :	-15°C to -25°C/1 year(Do not lower than -25°C)
Observed Band :	80 100kD
Background :	#REF!

Function :	<u>#REF!</u>
Subcellular Location :	<u>Secreted.</u>
Expression :	<u>Liver specific.</u>
Sort :	<u>8728</u>
No4 :	<u>1</u>
Host :	<u>Rabbit</u>
Modifications :	<u>Unmodified</u>

Products Images



Immunohistochemical analysis of paraffin-embedded human Squamous cell carcinoma of lung. 1, Antibody was diluted at 1:200(4° overnight). 2, Tris-EDTA,pH9.0 was used for antigen retrieval. 3,Secondary antibody was diluted at 1:200(room temperature, 45min).