

**Caspase 10 (p23/17, Cleaved-Val220) Antibody**

|                              |  |
|------------------------------|--|
| <b>Catalog No :</b>          | YC0107   |
| <b>Reactivity :</b>          | Human;Mouse;Rat  |
| <b>Applications :</b>        | WB;ELISA   |
| <b>Target :</b>              | Caspase-10   |
| <b>Fields :</b>              | >>Apoptosis;>>RIG-I-like receptor signaling pathway;>>TNF signaling pathway;>>Tuberculosis;>>Hepatitis B   |
| <b>Gene Name :</b>           | CASP10 MCH4  |
| <b>Protein Name :</b>        | Caspase10  |
| <b>Human Gene Id :</b>       | 843  |
| <b>Human Swiss Prot No :</b> | Q92851   |
| <b>Immunogen :</b>           | Synthesized peptide derived from human Caspase 10 (p23/17, Cleaved-Val220)                                 |
| <b>Specificity :</b>         | This antibody detects endogenous levels of human Caspase 10 (p23/17, Cleaved-Val220)                       |
| <b>Formulation :</b>         | Liquid in PBS containing 50% glycerol, 0.5% BSA and 0.02% sodium azide.                                    |
| <b>Source :</b>              | Polyclonal, Rabbit,IgG   |
| <b>Dilution :</b>            | WB 1:500-2000, ELISA(peptide)1:5000-20000  |
| <b>Purification :</b>        | The antibody was affinity-purified from mouse ascites by affinity-chromatography using specific immunogen. |
| <b>Concentration :</b>       | 1 mg/ml  |
| <b>Storage Stability :</b>   | -15°C to -25°C/1 year(Do not lower than -25°C)   |

---

**Observed Band :** 58kD,23kD

---

**Background :** This gene encodes a protein which is a member of the cysteine-aspartic acid protease (caspase) family. Sequential activation of caspases plays a central role in the execution-phase of cell apoptosis. Caspases exist as inactive proenzymes which undergo proteolytic processing at conserved aspartic residues to produce two subunits, large and small, that dimerize to form the active enzyme. This protein cleaves and activates caspases 3 and 7, and the protein itself is processed by caspase 8. Mutations in this gene are associated with type IIA autoimmune lymphoproliferative syndrome, non-Hodgkin lymphoma and gastric cancer. Alternatively spliced transcript variants encoding different isoforms have been described for this gene. [provided by RefSeq, Apr 2011],

---

**Function :** catalytic activity:Strict requirement for Asp at position P1 and has a preferred cleavage sequence of Leu-Gln-Thr-Asp-|-Gly.,disease:Defects in CASP10 are a cause of familial non-Hodgkin lymphoma (NHL) [MIM:605027]. NHL is a cancer that starts in cells of the lymph system, which is part of the body's immune system. NHLs can occur at any age and are often marked by enlarged lymph nodes, fever and weight loss.,disease:Defects in CASP10 are a cause of gastric cancers [MIM:137215].,disease:Defects in CASP10 are the cause of autoimmune lymphoproliferative syndrome type 2A (ALPS2A) [MIM:603909]. ALPS2 is characterized by abnormal lymphocyte and dendritic cell homeostasis and immune regulatory defects.,function:Involved in the activation cascade of caspases responsible for apoptosis execution. Recruited to both Fas- and TNFR-1 receptors in a FADD dependent manner. May participate in the granzym

---

**Subcellular Location :** cytosol,CD95 death-inducing signaling complex,riposome,

---

**Expression :** Detectable in most tissues. Lowest expression is seen in brain, kidney, prostate, testis and colon.

---

**Tag :** hot,orthogonal

---

**Sort :** 3147

---

**No4 :** 1

---

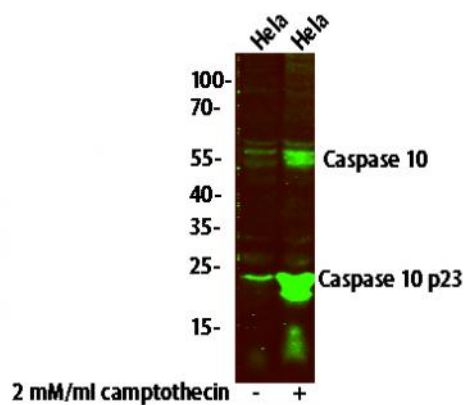
**Host :** Rabbit

---

**Modifications :** Unmodified

---

**Products Images**



Western blot analysis of HeLa cell treated or untreated with 2 mM/ml camptothecin , primary antibody was diluted at 1:1000, 4° over night, secondary antibody(cat: RS23920)was diluted at 1:10000, 37° 1hour.