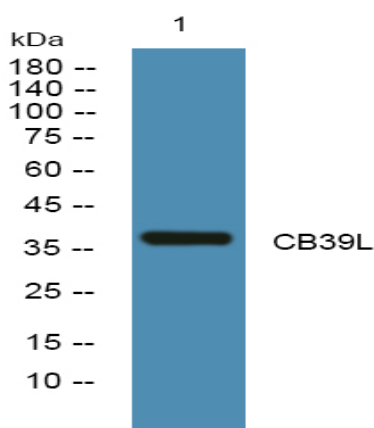


CB39L Polyclonal Antibody

Catalog No :	YN0526
Reactivity :	Human;Mouse
Applications :	WB;ELISA
Target :	CB39L
Fields :	>>mTOR signaling pathway;>>AMPK signaling pathway
Gene Name :	CAB39L
Protein Name :	Calcium-binding protein 39-like (Antigen MLAA-34) (MO25beta) (Mo25-like protein)
Human Gene Id :	81617
Human Swiss Prot No :	Q9H9S4
Mouse Swiss Prot No :	Q9DB16
Immunogen :	Synthesized peptide derived from part region of human protein
Specificity :	CB39L Polyclonal Antibody detects endogenous levels of protein.
Formulation :	Liquid in PBS containing 50% glycerol, and 0.02% sodium azide.
Source :	Polyclonal, Rabbit,IgG
Dilution :	WB 1:500-2000 ELISA 1:5000-20000
Purification :	The antibody was affinity-purified from rabbit antiserum by affinity-chromatography using epitope-specific immunogen.
Concentration :	1 mg/ml
Storage Stability :	-15°C to -25°C/1 year(Do not lower than -25°C)

Observed Band :	37kD
Cell Pathway :	mTOR;
Background :	miscellaneous:Found in serum of 50% of patients with acute monocytic leukemia.,similarity:Belongs to the Mo25 family.,
Function :	miscellaneous:Found in serum of 50% of patients with acute monocytic leukemia.,similarity:Belongs to the Mo25 family.,
Subcellular Location :	cytosol,extracellular exosome,
Expression :	Monocytic leukemia,Placenta,
Sort :	18227
No4 :	1
Host :	Rabbit
Modifications :	Unmodified

Products Images



Western blot analysis of lysates from KB cells, primary antibody was diluted at 1:1000, 4° over night