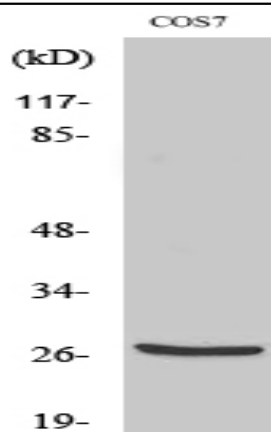


Cleaved-Cathepsin Z (L62) Polyclonal Antibody

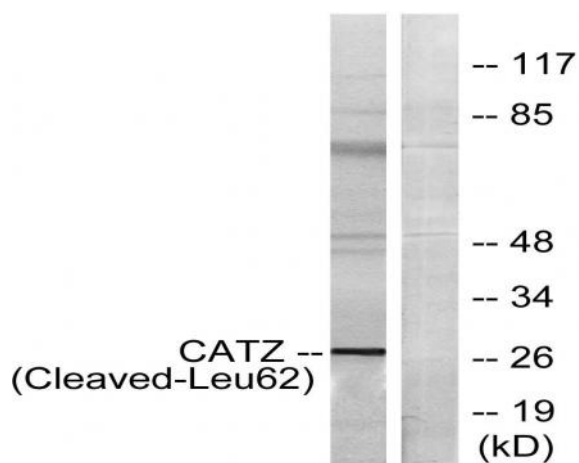
Catalog No :	YC0046
Reactivity :	Human;Monkey
Applications :	WB;ELISA
Target :	Cathepsin Z
Fields :	>>Lysosome;>>Apoptosis
Gene Name :	CTSZ
Protein Name :	Cathepsin Z
Human Gene Id :	1522
Human Swiss Prot No :	Q9UBR2
Mouse Swiss Prot No :	Q9WUU7
Immunogen :	The antiserum was produced against synthesized peptide derived from human CATZ. AA range:43-92
Specificity :	Cleaved-Cathepsin Z (L62) Polyclonal Antibody detects endogenous levels of fragment of activated Cathepsin Z protein resulting from cleavage adjacent to L62.
Formulation :	Liquid in PBS containing 50% glycerol, 0.5% BSA and 0.02% sodium azide.
Source :	Polyclonal, Rabbit,IgG
Dilution :	WB 1:500 - 1:2000. ELISA: 1:5000. Not yet tested in other applications.
Purification :	The antibody was affinity-purified from rabbit antiserum by affinity-chromatography using epitope-specific immunogen.
Concentration :	1 mg/ml

Storage Stability :	<u>-15°C to -25°C/1 year(Do not lower than -25°C)</u>
Observed Band :	<u>27kD</u>
Cell Pathway :	<u>Lysosome;</u>
Background :	<u>The protein encoded by this gene is a lysosomal cysteine proteinase and member of the peptidase C1 family. It exhibits both carboxy-monopeptidase and carboxy-dipeptidase activities. The encoded protein has also been known as cathepsin X and cathepsin P. This gene is expressed ubiquitously in cancer cell lines and primary tumors and, like other members of this family, may be involved in tumorigenesis. [provided by RefSeq, Oct 2008],</u>
Function :	<u>catalytic activity:Release of C-terminal amino acid residues with broad specificity, but lacks action on C-terminal proline. Shows weak endopeptidase activity.,function:Exhibits carboxy-monopeptidase as well as carboxy-dipeptidase activity.,similarity:Belongs to the peptidase C1 family.,tissue specificity:Widely expressed.,</u>
Subcellular Location :	<u>Lysosome.</u>
Expression :	<u>Widely expressed.</u>
Tag :	<u>orthogonal</u>
Sort :	<u>4186</u>
No4 :	<u>1</u>
Host :	<u>Rabbit</u>
Modifications :	<u>Unmodified</u>

Products Images



Western Blot analysis of various cells using Cleaved-Cathepsin Z (L62) Polyclonal Antibody



Western blot analysis of lysates from COS7 cells, treated with etoposide 25uM 1h, using CATZ (Cleaved-Leu62) Antibody. The lane on the right is blocked with the synthesized peptide.