

Cleaved-Caspase-2 p18 (G170) Polyclonal Antibody

Catalog No :	YC0024
Reactivity :	Human;Mouse;Rat
Applications :	WB;ELISA
Target :	Caspase-2
Fields :	>>Apoptosis
Gene Name :	CASP2
Protein Name :	Caspase2
Human Gene Id :	835
Human Swiss Prot No :	P42575
Mouse Swiss Prot No :	P29594
Immunogen :	The antiserum was produced against synthesized peptide derived from human Caspase 2 p18 N-terminal. AA range:151-200
Specificity :	Cleaved-Caspase-2 p18 (G170) Polyclonal Antibody detects endogenous levels of fragment of activated Caspase-2 p18 protein resulting from cleavage adjacent to G170.
Formulation :	Liquid in PBS containing 50% glycerol, 0.5% BSA and 0.02% sodium azide.
Source :	Polyclonal, Rabbit,IgG
Dilution :	WB 1:500 - 1:2000. ELISA: 1:40000. Not yet tested in other applications.
Purification :	The antibody was affinity-purified from rabbit antiserum by affinity-chromatography using epitope-specific immunogen.
Concentration :	1 mg/ml

Storage Stability : -15°C to -25°C/1 year(Do not lower than -25°C)

Observed Band : 18 or 35kD

Background : This gene encodes a member of the cysteine-aspartic acid protease (caspase) family. Caspases mediate cellular apoptosis through the proteolytic cleavage of specific protein substrates. The encoded protein may function in stress-induced cell death pathways, cell cycle maintenance, and the suppression of tumorigenesis. Increased expression of this gene may play a role in neurodegenerative disorders including Alzheimer's disease, Huntington's disease and temporal lobe epilepsy. Alternatively spliced transcript variants encoding multiple isoforms have been observed for this gene. [provided by RefSeq, Jan 2011],

Function : alternative products:Isoforms differ in the N- and C-termini,catalytic activity:Strict requirement for an Asp residue at P1, with 316-asp being essential for proteolytic activity and has a preferred cleavage sequence of Val-Asp-Val-Ala-Asp-|-,function:Involved in the activation cascade of caspases responsible for apoptosis execution. Might function by either activating some proteins required for cell death or inactivating proteins necessary for cell survival.,PTM:The mature protease can process its own propeptide, but not that of other caspases.,similarity:Belongs to the peptidase C14A family.,similarity:Contains 1 CARD domain.,subunit:Heterotetramer that consists of two anti-parallel arranged heterodimers, each one formed by a p18 subunit and a p12 subunit. Interacts with LRDD.,tissue specificity:Expressed at higher levels in the embryonic lung, liver and kidney than in the heart and b

Subcellular Location : nucleus,cytoplasm,mitochondrion,cytosol,membrane,

Expression : Expressed at higher levels in the embryonic lung, liver and kidney than in the heart and brain. In adults, higher level expression is seen in the placenta, lung, kidney, and pancreas than in the heart, brain, liver and skeletal muscle.

Tag : orthogonal,hot

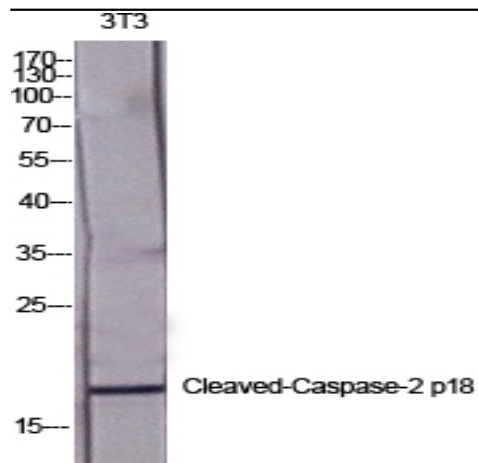
Sort : 4145

No4 : 1

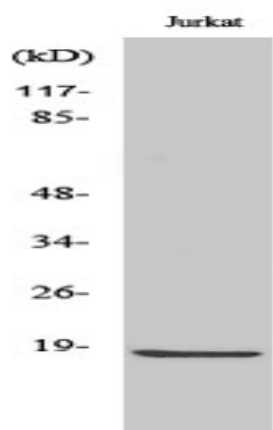
Host : Rabbit

Modifications : Unmodified

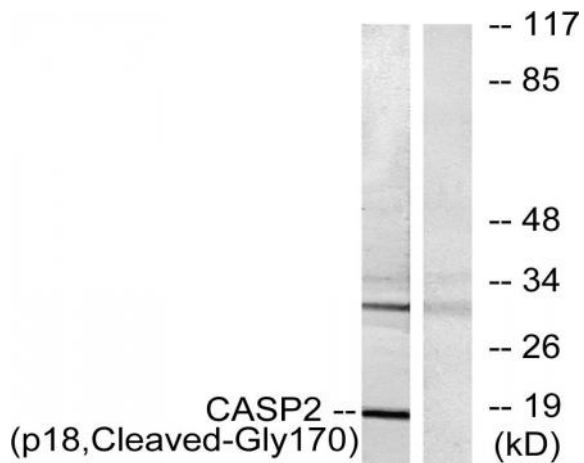
Products Images



Western Blot analysis of various cells using Cleaved-Caspase-2 p18 (G170) Polyclonal Antibody diluted at 1:2000



Western Blot analysis of Jurkat cells using Cleaved-Caspase-2 p18 (G170) Polyclonal Antibody diluted at 1:2000



Western blot analysis of lysates from Jurkat cells, treated with etoposide 25uM 24h, using Caspase 2 (p18, Cleaved-Gly170) Antibody. The lane on the right is blocked with the synthesized peptide.