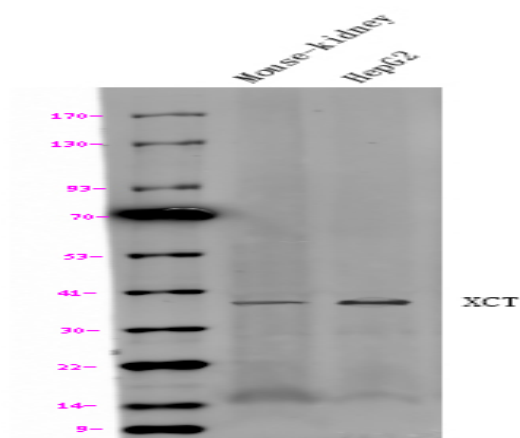


XCT rabbit pAb

Catalog No :	YT8130
Reactivity :	Human;Mouse
Applications :	IHC;WB
Target :	SLC7A11
Gene Name :	SLC7A11
Protein Name :	Cystine/glutamate transporter (Amino acid transport system xc-) (Calcium channel blocker resistance protein CCBR1) (Solute carrier family 7 member 11) (xCT)
Human Gene Id :	23657
Human Swiss Prot No :	Q9UPY5
Mouse Gene Id :	26570
Mouse Swiss Prot No :	Q9WTR6
Immunogen :	Synthesized peptide derived from human N-terminal XCT
Specificity :	This antibody detects endogenous levels of XCT at Human, Mouse
Formulation :	Liquid in PBS containing 50% glycerol, and 0.02% sodium azide.
Source :	Polyclonal, Rabbit,IgG
Dilution :	WB 1:500-2000 IHC 1:50-200
Purification :	The antibody was affinity-purified from rabbit antiserum by affinity-chromatography using epitope-specific immunogen.
Concentration :	1 mg/ml
Storage Stability :	-15°C to -25°C/1 year(Do not lower than -25°C)

Molecularweight :	55kD
Observed Band :	35kD
Function :	Sodium-independent, high-affinity exchange of anionic amino acids with high specificity for anionic form of cystine and glutamate.
Subcellular Location :	Membrane ; Multi-pass membrane protein .
Tag :	hot
Sort :	1
No4 :	1
Host :	Rabbit
Modifications :	Unmodified

Products Images



Western blot analysis of lysates from various cells, using primary antibody dilution at 1:1000.