

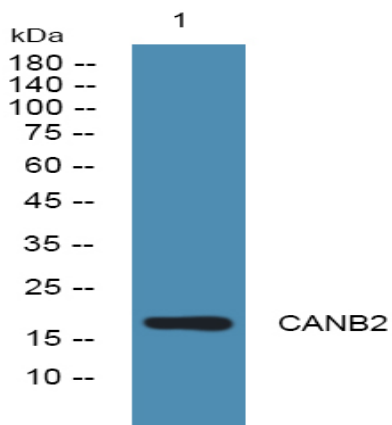
CANB2 Polyclonal Antibody

Catalog No :	YN0515
Reactivity :	Human;Rat
Applications :	WB;ELISA
Target :	CANB2
Fields :	>>MAPK signaling pathway;>>Calcium signaling pathway;>>cGMP-PKG signaling pathway;>>Oocyte meiosis;>>Cellular senescence;>>Wnt signaling pathway;>>Axon guidance;>>VEGF signaling pathway;>>Osteoclast differentiation;>>C-type lectin receptor signaling pathway;>>Natural killer cell mediated cytotoxicity;>>Th1 and Th2 cell differentiation;>>Th17 cell differentiation;>>T cell receptor signaling pathway;>>B cell receptor signaling pathway;>>Long-term potentiation;>>Glutamatergic synapse;>>Oxytocin signaling pathway;>>Glucagon signaling pathway;>>Renin secretion;>>Alzheimer disease;>>Amyotrophic lateral sclerosis;>>Prion disease;>>Pathways of neurodegeneration - multiple diseases;>>Amphetamine addiction;>>Tuberculosis;>>Human cytomegalovirus infection;>>Human T-cell leukemia virus 1 infection;>>Kaposi sarcoma-associated herpesvirus infection;>>Human immunodeficiency virus 1 infection;>>PD-L1 expression and PD-1 checkpoint pathway in cancer;>>Lipid and atherosclerosis
Gene Name :	PPP3R2 CBLP PPP3RL
Protein Name :	Calcineurin subunit B type 2 (Calcineurin B-like protein) (CBLP) (Calcineurin BII) (CNBII) (PPP3R1-like) (Protein phosphatase 2B regulatory subunit 2) (Protein phosphatase 3 regulatory subunit B beta)
Human Gene Id :	5535
Human Swiss Prot No :	Q96LZ3
Mouse Swiss Prot No :	Q63811
Rat Swiss Prot No :	P28470
Immunogen :	Synthesized peptide derived from part region of human protein
Specificity :	CANB2 Polyclonal Antibody detects endogenous levels of protein.

Formulation :	Liquid in PBS containing 50% glycerol, and 0.02% sodium azide.
Source :	Polyclonal, Rabbit,IgG
Dilution :	WB 1:500-2000 ELISA 1:5000-20000
Purification :	The antibody was affinity-purified from rabbit antiserum by affinity-chromatography using epitope-specific immunogen.
Concentration :	1 mg/ml
Storage Stability :	-15°C to -25°C/1 year(Do not lower than -25°C)
Observed Band :	18kD
Cell Pathway :	MAPK_ERK_Growth;MAPK_G_Protein;Calcium;Oocyte meiosis;Apoptosis_Inhibition;Apoptosis_Mitochondrial;Apoptosis_Overview;WNT;WNT-T CELLAxon guidance;VEGF;Natural killer cell mediated cytotoxicity;T_Cell_
Background :	function:Regulatory subunit of calcineurin, a calcium-dependent, calmodulin stimulated protein phosphatase. Confers calcium sensitivity.,miscellaneous:This protein has four functional calcium-binding sites.,similarity:Belongs to the calcineurin regulatory subunit family.,similarity:Contains 4 EF-hand domains.,subunit:Composed of a catalytic subunit (A) and a regulatory subunit (B).,tissue specificity:Testis specific.,
Function :	function:Regulatory subunit of calcineurin, a calcium-dependent, calmodulin stimulated protein phosphatase. Confers calcium sensitivity.,miscellaneous:This protein has four functional calcium-binding sites.,similarity:Belongs to the calcineurin regulatory subunit family.,similarity:Contains 4 EF-hand domains.,subunit:Composed of a catalytic subunit (A) and a regulatory subunit (B).,tissue specificity:Testis specific.,
Subcellular Location :	Mitochondrion . Localizes in the mitochondria in a SPATA33-dependent manner.
Expression :	Testis-specific.
Sort :	18202
No4 :	1
Host :	Rabbit

Modifications : Unmodified

Products Images



Western blot analysis of lysates from KB cells, primary antibody was diluted at 1:1000, 4° over night