

## MCM10 rabbit pAb

<b>Catalog No :</b>	YT8101
<b>Reactivity :</b>	Human;Mouse
<b>Applications :</b>	IHC;WB
<b>Target :</b>	MCM10
<b>Gene Name :</b>	MCM10 PRO2249
<b>Protein Name :</b>	Protein MCM10 homolog (HsMCM10)
<b>Human Gene Id :</b>	55388
<b>Human Swiss Prot No :</b>	Q7L590
<b>Mouse Gene Id :</b>	70024
<b>Mouse Swiss Prot No :</b>	Q0VBD2
<b>Immunogen :</b>	Synthesized peptide derived from human N-terminal MCM10
<b>Specificity :</b>	This antibody detects endogenous levels of MCM10 at Human, Mouse
<b>Formulation :</b>	Liquid in PBS containing 50% glycerol, and 0.02% sodium azide.
<b>Source :</b>	Polyclonal, Rabbit,IgG
<b>Dilution :</b>	WB 1:500-2000 IHC 1:50-200
<b>Purification :</b>	The antibody was affinity-purified from rabbit antiserum by affinity-chromatography using epitope-specific immunogen.
<b>Concentration :</b>	1 mg/ml
<b>Storage Stability :</b>	-15°C to -25°C/1 year(Do not lower than -25°C)

**Molecularweight :** 96kD

**Function :** Acts as a replication initiation factor that brings together the MCM2-7 helicase and the DNA polymerase alpha/primase complex in order to initiate DNA replication. Additionally, plays a role in preventing DNA damage during replication. Key effector of the RBBP6 and ZBTB38-mediated regulation of DNA-replication and common fragile sites stability; acts as a direct target of transcriptional repression by ZBTB38 .

**Subcellular Location :** Nucleus . Colocalizes with ORC2 in nuclei foci. Associated with chromatin in S phase. From early to mid-S phase located in discrete nuclear foci. In early S phase, several hundred foci appeared throughout the nucleus. In mid-S phase, the foci appeared at the nuclear periphery and nucleolar regions. In the late S and G phases localized to nucleoli.

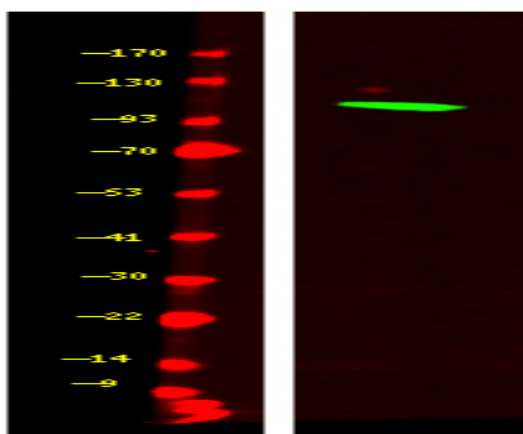
**Sort :** 999

**No4 :** 1

**Host :** Rabbit

**Modifications :** Unmodified

## Products Images



Western Blot analysis of Hela cell lysis, using primary antibody at 1:1000 dilution. Secondary antibody(catalog#:RS23920) was diluted at 1:10000