

PROZ rabbit pAb

Catalog No :	YT7866
Reactivity :	Human;Mouse
Applications :	WB;IHC
Target :	PROZ
Gene Name :	PROZ
Protein Name :	PROZ
Human Gene Id :	8858
Human Swiss Prot No :	P22891
Mouse Gene Id :	66901
Mouse Swiss Prot No :	Q9CQW3
Immunogen :	Synthesized peptide derived from human PROZ AA range: 141-190
Specificity :	This antibody detects endogenous levels of Human PROZ
Formulation :	Liquid in PBS containing 50% glycerol, 0.5% BSA and 0.02% sodium azide.
Source :	Polyclonal, Rabbit,IgG
Dilution :	WB 1:500-2000;IHC 1:50-300
Purification :	The antibody was affinity-purified from rabbit antiserum by affinity-chromatography using epitope-specific immunogen.
Concentration :	1 mg/ml
Storage Stability :	-15°C to -25°C/1 year(Do not lower than -25°C)

Molecularweight : 44kD

Background : This gene encodes a liver vitamin K-dependent glycoprotein that is synthesized in the liver and secreted into the plasma. The encoded protein plays a role in regulating blood coagulation by complexing with protein Z-dependent protease inhibitor to directly inhibit activated factor X at the phospholipid surface. Deficiencies in this protein are associated with an increased risk of ischemic arterial diseases and fetal loss. Mutations in this gene are the cause of protein Z deficiency. Alternate splicing results in multiple transcript variants. [provided by RefSeq, Jan 2012],

Function : caution:Although homologous with the vitamin K-dependent clotting factors, it has lost two of the essential catalytic residues and has no enzymatic activity.,function:Appears to assist hemostasis by binding thrombin and promoting its association with phospholipid vesicles.,PTM:The iron and 2-oxoglutarate dependent 3-hydroxylation of aspartate and asparagine is (R) stereospecific within EGF domains.,similarity:Belongs to the peptidase S1 family.,similarity:Contains 1 Gla (gamma-carboxy-glutamate) domain.,similarity:Contains 1 peptidase S1 domain.,similarity:Contains 2 EGF-like domains.,tissue specificity:Plasma.,

Subcellular Location : Secreted.

Expression : Plasma.

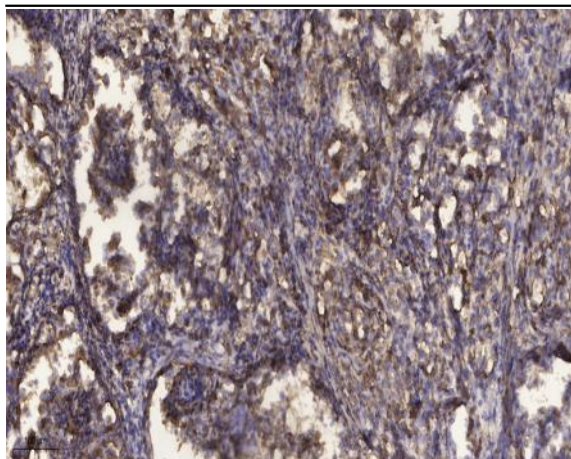
Sort : 13075

No4 : 1

Host : Rabbit

Modifications : Unmodified

Products Images



Immunohistochemical analysis of paraffin-embedded human Squamous cell carcinoma of lung. 1, Antibody was diluted at 1:200(4° overnight). 2, Tris-EDTA,pH9.0 was used for antigen retrieval. 3,Secondary antibody was diluted at 1:200(room temperature, 45min).