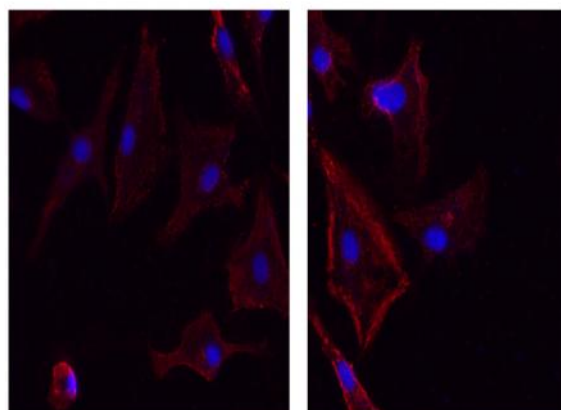


**GSDME N-terminal rabbit pAb**

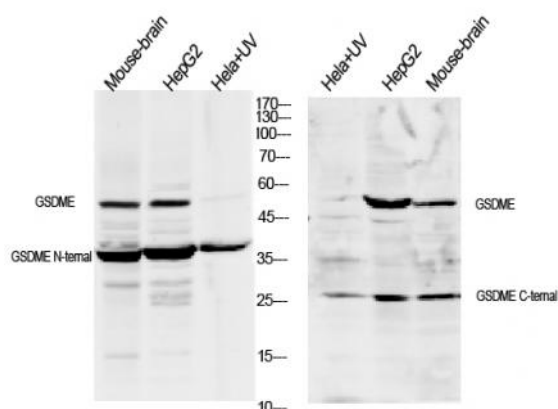
|                              |   |
|------------------------------|---|
| <b>Catalog No :</b>          | YT7990  |
| <b>Reactivity :</b>          | Human;Mouse;Rat   |
| <b>Applications :</b>        | IF;WB;IHC   |
| <b>Target :</b>              | GSDME   |
| <b>Gene Name :</b>           | GSDME   |
| <b>Protein Name :</b>        | Gasdermin-E,DFNA5,Dfna5h,EG14210,2310037D07Rik .4932441K13Rik ,ICERE 1,ICERE-1,Deafness, autosomal dominant 5,Non-syndromic hearing impairment protein 5,GSDME-NT |
| <b>Human Swiss Prot No :</b> | O60443  |
| <b>Immunogen :</b>           | Synthesized peptide derived from human GSDME. AA range:1-100  |
| <b>Specificity :</b>         | The antibody detects endogenous full length and n-terminal fragment of gsdme protein,   |
| <b>Formulation :</b>         | Liquid in PBS containing 50% glycerol, and 0.02% sodium azide.  |
| <b>Source :</b>              | Polyclonal, Rabbit,IgG  |
| <b>Dilution :</b>            | IF 1:50-200 WB 1:5000-20000 IHC 1:200-300   |
| <b>Purification :</b>        | The antibody was affinity-purified from rabbit antiserum by affinity-chromatography using epitope-specific immunogen.   |
| <b>Concentration :</b>       | 1 mg/ml   |
| <b>Storage Stability :</b>   | -15 °C to -25 °C/1 year(Do not lower than -25 °C)   |
| <b>Observed Band :</b>       | 36 55kD   |
| <b>Function :</b>            | Cleavage at Asp-270 by CASP3 (mature and uncleaved precursor forms) or granzyme B (GZMB) relieves autoinhibition and is sufficient to initiate pyroptosis.        |

|                               |  |
|-------------------------------|--|
| <b>Subcellular Location :</b> | [Gasdermin-E, N-terminal]: Cell membrane ; Multi-pass membrane protein . ;<br>[Gasdermin-E]: Cytoplasm, cytosol .  |
| <b>Expression :</b>           | Expressed in cochlea (PubMed:9771715). Low level of expression in heart, brain, placenta, lung, liver, skeletal muscle, kidney and pancreas, with highest expression in placenta (PubMed:9771715). |
| <b>Tag :</b>                  | orthogonal   |
| <b>Sort :</b>                 | 1  |
| <b>No4 :</b>                  | 1  |
| <b>Host :</b>                 | Rabbit   |
| <b>Modifications :</b>        | Unmodified   |

## Products Images



Immunofluorescence analysis of un-treated (left) A549 and UV treated(right) A549 cell. 1,primary Antibody was diluted at 1:200(4°C overnight). 2, Goat Anti Rabbit IgG (H&L) - Alexa Fluor 594 Secondary antibody was diluted at 1:1000(room temperature, 50min).3, Picture B: DAPI(blue) 10min.



Western blot analysis of lysates from 1)mouse-brain, 2)HeLa cells treated by UV 15min,3) HepG2 cells, primary antibody was diluted at 1:1000, 4° over night, secondary antibody HRP goat anti rabbit (Immunoway:RS0002) was diluted at 1:10000