

## RFA1 rabbit pAb

<b>Catalog No :</b>	YT7984
<b>Reactivity :</b>	Human;Monkey;Mouse;Rat
<b>Applications :</b>	WB;ELISA;IHC
<b>Target :</b>	RFA1
<b>Fields :</b>	>>DNA replication;>>Nucleotide excision repair;>>Mismatch repair;>>Homologous recombination;>>Fanconi anemia pathway
<b>Gene Name :</b>	RPA1 REPA1 RPA70
<b>Protein Name :</b>	RFA1
<b>Human Gene Id :</b>	6117
<b>Human Swiss Prot No :</b>	P27694
<b>Mouse Gene Id :</b>	68275
<b>Mouse Swiss Prot No :</b>	Q8VEE4
<b>Immunogen :</b>	Synthesized peptide derived from human RFA1
<b>Specificity :</b>	This antibody detects endogenous levels of Human,Monkey,Mouse,Rat RFA1
<b>Formulation :</b>	Liquid in PBS containing 50% glycerol, 0.5% BSA and 0.02% sodium azide.
<b>Source :</b>	Polyclonal, Rabbit,IgG
<b>Dilution :</b>	WB 1:500-2000;IHC 1:50-300; ELISA 2000-20000
<b>Purification :</b>	The antibody was affinity-purified from rabbit antiserum by affinity-chromatography using epitope-specific immunogen.
<b>Concentration :</b>	1 mg/ml

**Storage Stability :** -15°C to -25°C/1 year(Do not lower than -25°C)

**Molecularweight :** 68kD

**Background :** function:It participates in a very early step in initiation. RP-A is a single-stranded DNA-binding protein. Absolutely required for simian virus 40 DNA replication in vitro.,PTM:Phosphorylated upon DNA damage, probably by ATM or ATR.,similarity:Belongs to the replication factor A protein 1 family.,subunit:Heterotrimer of 70, 32 and 14 kDa chains. The DNA-binding activity may reside exclusively on the 70 kDa subunit. Interacts with RIP and XPA. Interacts with RPA4.,

**Function :** function:It participates in a very early step in initiation. RP-A is a single-stranded DNA-binding protein. Absolutely required for simian virus 40 DNA replication in vitro.,PTM:Phosphorylated upon DNA damage, probably by ATM or ATR.,similarity:Belongs to the replication factor A protein 1 family.,subunit:Heterotrimer of 70, 32 and 14 kDa chains. The DNA-binding activity may reside exclusively on the 70 kDa subunit. Interacts with RIP and XPA. Interacts with RPA4.,

**Subcellular Location :** Nucleus . Nucleus, PML body . Enriched in PML bodies in cells displaying alternative lengthening of their telomeres. .

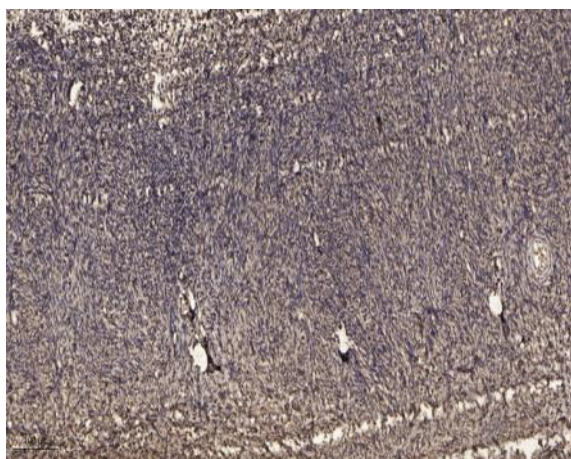
**Sort :** 14405

**No4 :** 1

**Host :** Rabbit

**Modifications :** Unmodified

## Products Images



Immunohistochemical analysis of paraffin-embedded human oophoroma. 1, Antibody was diluted at 1:200(4° overnight). 2, Tris-EDTA,pH9.0 was used for antigen retrieval. 3,Secondary antibody was diluted at 1:200(room temperature, 45min).