

SNAT rabbit pAb

Catalog No :	YT7968
Reactivity :	Human;Mouse;Rat
Applications :	WB;IHC
Target :	SNAT
Fields :	>>Tryptophan metabolism;>>Metabolic pathways
Gene Name :	AANAT SNAT
Protein Name :	SNAT
Human Gene Id :	15
Human Swiss Prot No :	Q16613
Mouse Gene Id :	11298
Mouse Swiss Prot No :	O88816
Rat Gene Id :	25120
Rat Swiss Prot No :	Q64666
Immunogen :	Synthesized peptide derived from human SNAT
Specificity :	This antibody detects endogenous levels of Human,Mouse,Rat SNAT
Formulation :	Liquid in PBS containing 50% glycerol, 0.5% BSA and 0.02% sodium azide.
Source :	Polyclonal, Rabbit,IgG
Dilution :	WB 1:500-2000;IHC 1:50-300
Purification :	The antibody was affinity-purified from rabbit antiserum by affinity-

chromatography using epitope-specific immunogen.

Concentration : 1 mg/ml

Storage Stability : -15°C to -25°C/1 year(Do not lower than -25°C)

Molecularweight : 23kD

Subcellular Location : Cytoplasm .

Expression : Highly expressed in pineal gland and at lower levels in the retina. Weak expression in several brain regions and in the pituitary gland.

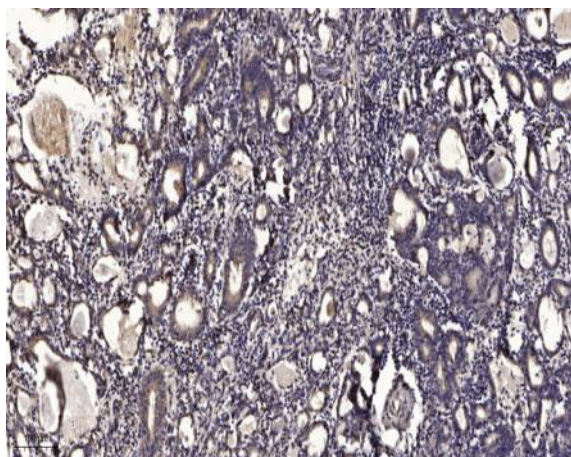
Sort : 16468

No4 : 1

Host : Rabbit

Modifications : Unmodified

Products Images



Immunohistochemical analysis of paraffin-embedded human Gastric adenocarcinoma. 1, Antibody was diluted at 1:200(4° overnight). 2, Tris-EDTA,pH9.0 was used for antigen retrieval. 3,Secondary antibody was diluted at 1:200(room temperature, 45min).