

## PROZ rabbit pAb

<b>Catalog No :</b>	YT7866
<b>Reactivity :</b>	Human;Mouse
<b>Applications :</b>	WB;IHC
<b>Target :</b>	PROZ
<b>Gene Name :</b>	PROZ
<b>Protein Name :</b>	PROZ
<b>Human Gene Id :</b>	8858
<b>Human Swiss Prot No :</b>	P22891
<b>Mouse Gene Id :</b>	66901
<b>Mouse Swiss Prot No :</b>	Q9CQW3
<b>Immunogen :</b>	Synthesized peptide derived from human PROZ AA range: 141-190
<b>Specificity :</b>	This antibody detects endogenous levels of Human PROZ
<b>Formulation :</b>	Liquid in PBS containing 50% glycerol, 0.5% BSA and 0.02% sodium azide.
<b>Source :</b>	Polyclonal, Rabbit,IgG
<b>Dilution :</b>	WB 1:500-2000;IHC 1:50-300
<b>Purification :</b>	The antibody was affinity-purified from rabbit antiserum by affinity-chromatography using epitope-specific immunogen.
<b>Concentration :</b>	1 mg/ml
<b>Storage Stability :</b>	-15°C to -25°C/1 year(Do not lower than -25°C)

---

**Molecularweight :** 44kD

---

**Background :** This gene encodes a liver vitamin K-dependent glycoprotein that is synthesized in the liver and secreted into the plasma. The encoded protein plays a role in regulating blood coagulation by complexing with protein Z-dependent protease inhibitor to directly inhibit activated factor X at the phospholipid surface. Deficiencies in this protein are associated with an increased risk of ischemic arterial diseases and fetal loss. Mutations in this gene are the cause of protein Z deficiency. Alternate splicing results in multiple transcript variants. [provided by RefSeq, Jan 2012],

---

**Function :** caution:Although homologous with the vitamin K-dependent clotting factors, it has lost two of the essential catalytic residues and has no enzymatic activity.,function:Appears to assist hemostasis by binding thrombin and promoting its association with phospholipid vesicles.,PTM:The iron and 2-oxoglutarate dependent 3-hydroxylation of aspartate and asparagine is (R) stereospecific within EGF domains.,similarity:Belongs to the peptidase S1 family.,similarity:Contains 1 Gla (gamma-carboxy-glutamate) domain.,similarity:Contains 1 peptidase S1 domain.,similarity:Contains 2 EGF-like domains.,tissue specificity:Plasma.,

---

**Subcellular Location :** Secreted.

---

**Expression :** Plasma.

---

**Sort :** 13075

---

**No4 :** 1

---

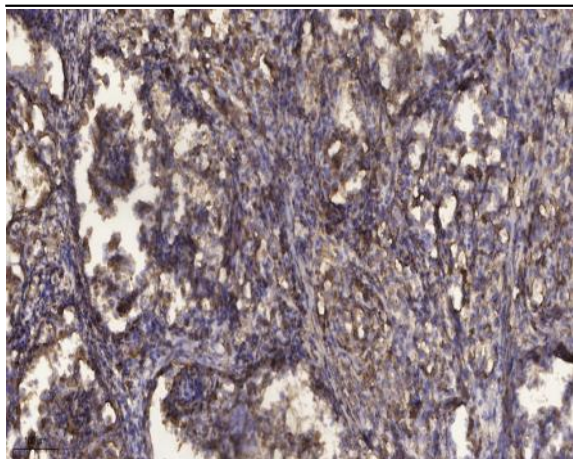
**Host :** Rabbit

---

**Modifications :** Unmodified

---

[Products Images](#)



Immunohistochemical analysis of paraffin-embedded human Squamous cell carcinoma of lung. 1, Antibody was diluted at 1:200(4° overnight). 2, Tris-EDTA,pH9.0 was used for antigen retrieval. 3,Secondary antibody was diluted at 1:200(room temperature, 45min).