

**MUC6 rabbit pAb**

<b>Catalog No :</b>	YT7802
<b>Reactivity :</b>	Human;Mouse
<b>Applications :</b>	WB;IHC
<b>Target :</b>	MUC6
<b>Gene Name :</b>	MUC6
<b>Protein Name :</b>	MUC6
<b>Human Gene Id :</b>	4588
<b>Human Swiss Prot No :</b>	Q6W4X9
<b>Mouse Gene Id :</b>	353328
<b>Mouse Swiss Prot No :</b>	Q80T03
<b>Immunogen :</b>	Synthesized peptide derived from human MUC6 AA range: 960-1040
<b>Specificity :</b>	This antibody detects endogenous levels of Human MUC6
<b>Formulation :</b>	Liquid in PBS containing 50% glycerol, 0.5% BSA and 0.02% sodium azide.
<b>Source :</b>	Polyclonal, Rabbit,IgG
<b>Dilution :</b>	WB 1:500-2000;IHC 1:50-300
<b>Purification :</b>	The antibody was affinity-purified from rabbit antiserum by affinity-chromatography using epitope-specific immunogen.
<b>Concentration :</b>	1 mg/ml
<b>Storage Stability :</b>	-15°C to -25°C/1 year(Do not lower than -25°C)

---

**Molecularweight :** 268kD

---

**Background :** The MUC6 gene encodes gastric mucin, a secreted glycoprotein that plays an essential role in epithelial cytoprotection from acid, proteases, pathogenic microorganisms, and mechanical trauma in the gastrointestinal tract (summary by Toribara et al., 1993 [PubMed 7680650]).[supplied by OMIM, Dec 2010],

---

**Function :** developmental stage:Early expressed in fetal development and was observed in Brunner's glands and pancreatic ducts at 18-19 weeks and in gastric glands at 20 weeks of gestation. Expressed transiently in the nephrogenic zone of the kidney in the early mid-trimester of development. Detected in the epithelium of ureteric buds at 13 weeks and at lower levels from 17 to 23 weeks of gestation.,function:May provide a mechanism for modulation of the composition of the protective mucus layer related to acid secretion or the presence of bacteria and noxious agents in the lumen. Play an important role in the cytoprotection of epithelial surfaces and are used as tumor markers in a variety of cancers. May play a role in epithelial organogenesis.,induction:Up-regulated by NFkB1. Repressed by mithramycin A which is an inhibitor of binding of transcription factors.,polymorphism:The number of repeats is

---

**Subcellular Location :** Secreted.

---

**Expression :** Expressed in the regenerative zone of gastric antrum, gastric body mucosa and gastric incisura mucosa. Expressed in the deeper mucous glands of gastric antrum. Overexpressed in Helicobacter pylori infected gastric epithelium. Highly expressed in duodenal Brunner's glands, gall bladder, seminal vesicle, pancreatic centroacinar cells and ducts, and periductal glands of the common bile duct.

---

**Sort :** 10344

---

**No4 :** 1

---

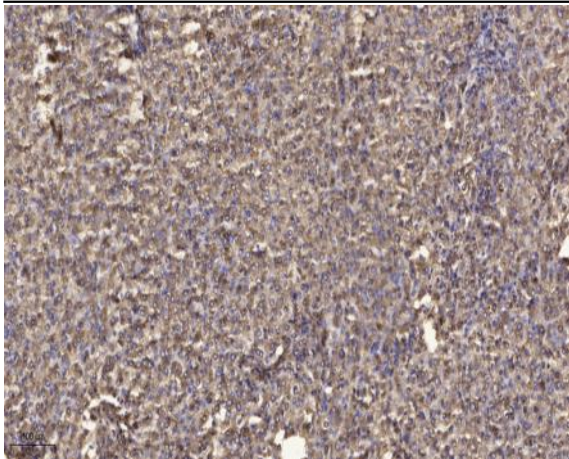
**Host :** Rabbit

---

**Modifications :** Unmodified

---

**Products Images**



Immunohistochemical analysis of paraffin-embedded human liver cancer. 1, Antibody was diluted at 1:200(4° overnight). 2, Tris-EDTA,pH9.0 was used for antigen retrieval. 3,Secondary antibody was diluted at 1:200(room temperature, 45min).