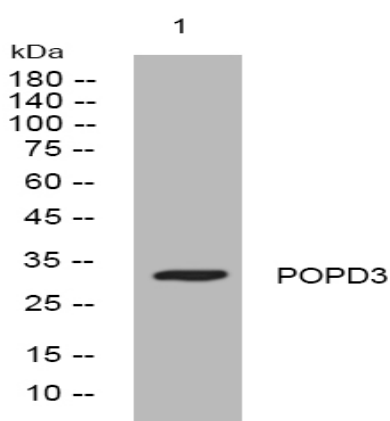


POPD3 rabbit pAb

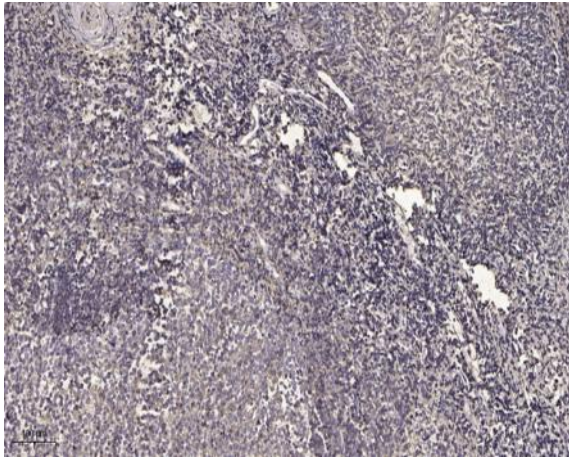
Catalog No :	YT7773
Reactivity :	Human;Mouse
Applications :	WB;IHC
Target :	POPD3
Gene Name :	POPDC3 POP3
Protein Name :	POPD3
Human Gene Id :	64208
Human Swiss Prot No :	Q9HBV1
Mouse Gene Id :	78977
Mouse Swiss Prot No :	Q9ES81
Immunogen :	Synthesized peptide derived from human POPD3 AA range: 111-161
Specificity :	This antibody detects endogenous levels of POPD3 at Human/Mouse
Formulation :	Liquid in PBS containing 50% glycerol, 0.5% BSA and 0.02% sodium azide.
Source :	Polyclonal, Rabbit,IgG
Dilution :	WB 1:500-2000;IHC 1:50-300
Purification :	The antibody was affinity-purified from rabbit antiserum by affinity-chromatography using epitope-specific immunogen.
Concentration :	1 mg/ml
Storage Stability :	-15°C to -25°C/1 year(Do not lower than -25°C)

Molecularweight : 32kD**Background :** This gene encodes a member of the POP family of proteins containing three putative transmembrane domains. This gene is expressed in cardiac and skeletal muscle and may play an important role in these tissues during development. Alternatively spliced transcript variants have been found. [provided by RefSeq, Nov 2008],**Function :** function:May play an important role in heart development.,similarity:Belongs to the popeye family.,tissue specificity:Expressed predominantly in skeletal muscle and detected in heart.,**Subcellular Location :** Membrane ; Multi-pass membrane protein .**Expression :** Expressed predominantly in skeletal muscle (at protein level) (PubMed:10882522, PubMed:31610034). Also detected in heart (PubMed:10882522).**Sort :** 12905**No4 :** 1**Host :** Rabbit**Modifications :** Unmodified

Products Images



Western blot analysis of lysates from PC-12 cells, primary antibody was diluted at 1:1000, 4° over night



Immunohistochemical analysis of paraffin-embedded human tonsil. 1, Antibody was diluted at 1:200(4° overnight). 2, Tris-EDTA,pH9.0 was used for antigen retrieval. 3,Secondary antibody was diluted at 1:200(room temperature, 45min).