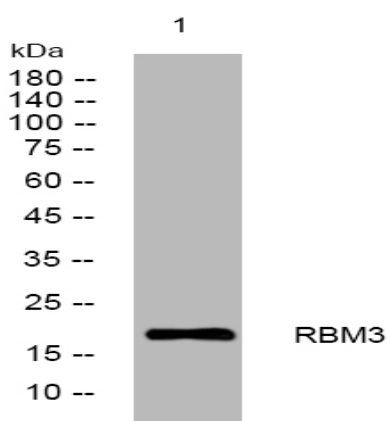


**RBM3 rabbit pAb**

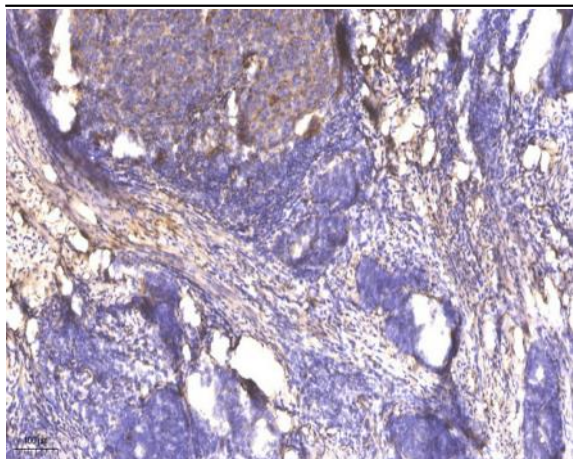
<b>Catalog No :</b>	YT7772
<b>Reactivity :</b>	Human;Mouse;Rat
<b>Applications :</b>	WB;IHC
<b>Target :</b>	RBM3
<b>Gene Name :</b>	RBM3 RNPL
<b>Protein Name :</b>	RBM3
<b>Human Gene Id :</b>	5935
<b>Human Swiss Prot No :</b>	P98179
<b>Mouse Gene Id :</b>	19652
<b>Mouse Swiss Prot No :</b>	O89086
<b>Rat Gene Id :</b>	114488
<b>Rat Swiss Prot No :</b>	Q925G0
<b>Immunogen :</b>	Synthesized peptide derived from human RBM3 AA range: 69-119
<b>Specificity :</b>	This antibody detects endogenous levels of RBM3 at Human/Mouse/Rat
<b>Formulation :</b>	Liquid in PBS containing 50% glycerol, 0.5% BSA and 0.02% sodium azide.
<b>Source :</b>	Polyclonal, Rabbit,IgG
<b>Dilution :</b>	WB 1:500-2000;IHC 1:50-300
<b>Purification :</b>	The antibody was affinity-purified from rabbit antiserum by affinity-chromatography using epitope-specific immunogen.

<b>Concentration :</b>	1 mg/ml
<b>Storage Stability :</b>	-15°C to -25°C/1 year(Do not lower than -25°C)
<b>Molecularweight :</b>	17kD
<b>Background :</b>	This gene is a member of the glycine-rich RNA-binding protein family and encodes a protein with one RNA recognition motif (RRM) domain. Expression of this gene is induced by cold shock and low oxygen tension. A pseudogene exists on chromosome 1. Multiple alternatively spliced transcript variants that are predicted to encode different isoforms have been characterized although some of these variants fit nonsense-mediated decay (NMD) criteria. [provided by RefSeq, Jul 2008],
<b>Function :</b>	PTM:Arg-105 is dimethylated, probably to asymmetric dimethylarginine.,similarity:Contains 1 RRM (RNA recognition motif) domain.,
<b>Subcellular Location :</b>	Nucleus . Cytoplasm . Cell projection, dendrite . Localizes in mRNA granules in dendrites. .
<b>Tag :</b>	hot
<b>Sort :</b>	14050
<b>No4 :</b>	1
<b>Host :</b>	Rabbit
<b>Modifications :</b>	Unmodified

## Products Images



Western blot analysis of lysates from DU145 cells, primary antibody was diluted at 1:1000, 4° over night



Immunohistochemical analysis of paraffin-embedded human cervical carcinoma. 1, Antibody was diluted at 1:200(4° overnight). 2, Tris-EDTA,pH9.0 was used for antigen retrieval. 3,Secondary antibody was diluted at 1:200(room temperature, 45min).