

GRPE2 rabbit pAb

Catalog No :	YT7768
Reactivity :	Human;Mouse
Applications :	WB
Target :	GRPE2
Gene Name :	GRPEL2
Protein Name :	GRPE2
Human Gene Id :	134266
Human Swiss Prot No :	Q8TAA5
Mouse Gene Id :	17714
Mouse Swiss Prot No :	O88396
Immunogen :	Synthesized peptide derived from human GRPE2 AA range: 42-92
Specificity :	This antibody detects endogenous levels of GRPE2 at Human/Mouse
Formulation :	Liquid in PBS containing 50% glycerol, 0.5% BSA and 0.02% sodium azide.
Source :	Polyclonal, Rabbit,IgG
Dilution :	WB 1:500-2000
Purification :	The antibody was affinity-purified from rabbit antiserum by affinity-chromatography using epitope-specific immunogen.
Concentration :	1 mg/ml
Storage Stability :	-15°C to -25°C/1 year(Do not lower than -25°C)

Molecularweight : 25kD**Function :**

function:Essential component of the PAM complex, a complex required for the translocation of transit peptide-containing proteins from the inner membrane into the mitochondrial matrix in an ATP-dependent manner.,function:Essential component of the PAM complex, a complex required for the translocation of transit peptide-containing proteins from the inner membrane into the mitochondrial matrix in an ATP-dependent manner. Seems to control the nucleotide-dependent binding of mitochondrial HSP70 to substrate proteins. Stimulates ATPase activity of mt-HSP70. May also serve to modulate the interconversion of oligomeric (inactive) and monomeric (active) forms of mt-HSP70.,similarity:Belongs to the grpE family.,subunit:Probable component of the PAM complex at least composed of a mitochondrial HSP70 protein, GRPEL1 or GRPEL2, TIMM44, TIMM16/MAGMAS and TIMM14/DNAJC19.,

Subcellular Location :

Mitochondrion matrix .

Sort :

7152

No4 :

1

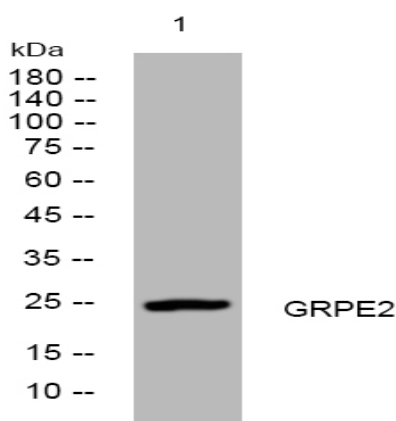
Host :

Rabbit

Modifications :

Unmodified

Products Images



Western blot analysis of lysates from HeLa cells, primary antibody was diluted at 1:1000, 4 ° over night