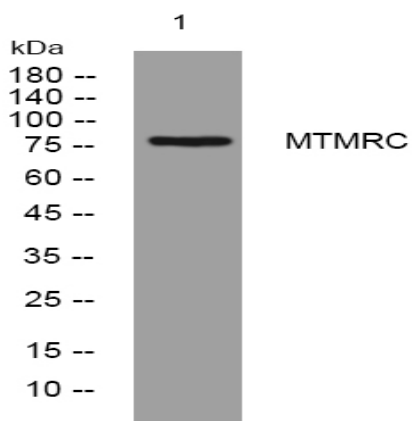


## MTMRC rabbit pAb

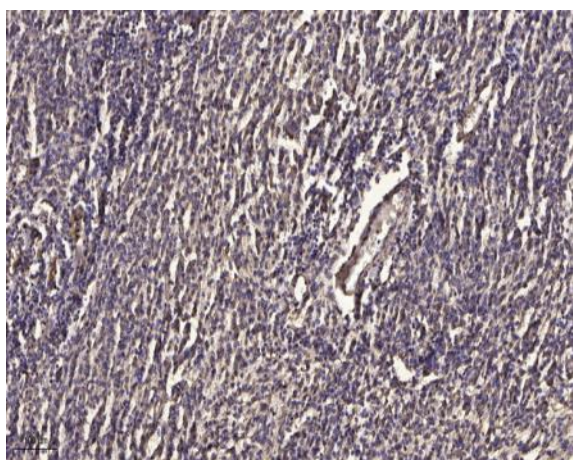
<b>Catalog No :</b>	YT7765
<b>Reactivity :</b>	Human;Mouse;Rat
<b>Applications :</b>	WB;ELISA;IHC
<b>Target :</b>	MTMRC
<b>Gene Name :</b>	MTMR12 KIAA1682 PIP3AP
<b>Protein Name :</b>	MTMRC
<b>Human Gene Id :</b>	54545
<b>Human Swiss Prot No :</b>	Q9C0I1
<b>Mouse Gene Id :</b>	268783
<b>Mouse Swiss Prot No :</b>	Q80TA6
<b>Rat Gene Id :</b>	310155
<b>Rat Swiss Prot No :</b>	Q5FVM6
<b>Immunogen :</b>	Synthesized peptide derived from human MTMRC AA range: 523-573
<b>Specificity :</b>	This antibody detects endogenous levels of MTMRC at Human/Mouse/Rat
<b>Formulation :</b>	Liquid in PBS containing 50% glycerol, 0.5% BSA and 0.02% sodium azide.
<b>Source :</b>	Polyclonal, Rabbit,IgG
<b>Dilution :</b>	WB 1:500-2000;IHC 1:50-300; ELISA 2000-20000
<b>Purification :</b>	The antibody was affinity-purified from rabbit antiserum by affinity-chromatography using epitope-specific immunogen.

<b>Concentration :</b>	1 mg/ml
<b>Storage Stability :</b>	-15°C to -25°C/1 year(Do not lower than -25°C)
<b>Molecularweight :</b>	82kD
<b>Background :</b>	Phosphatidylinositide 3-kinase-derived membrane-anchored phosphatidylinositides, such as phosphatidylinositol 3-phosphate (PtdIns(3)P), regulate diverse cellular processes. The protein encoded by this gene functions as an adaptor subunit in a complex with an active PtdIns(3)P 3-phosphatase. Alternatively spliced transcript variants encoding different isoforms have been found for this gene. [provided by RefSeq, Jun 2014],
<b>Function :</b>	caution:Lacks the phosphocysteine intermediate Cys active site in position 391 that is replaced by a Glu residue, preventing the hydrolase activity.,function:Inactive phosphatase that plays a role as an adapter for the phosphatase myotubularin to regulate myotubularin intracellular location.,miscellaneous:Catalytically inactive phosphatase.,similarity:Belongs to the protein-tyrosine phosphatase family. Non-receptor class myotubularin subfamily.,similarity:Contains 1 myotubularin phosphatase domain.,subcellular location:Localizes to punctate vesicles when associated with MTM1.,subunit:Interacts with myotubularin MTM1 and myotubularin-related MTMR2.,tissue specificity:Ubiquitous with prominent expression in brain, heart, kidney, placenta, and lung.,
<b>Subcellular Location :</b>	Cytoplasm . Sarcoplasmic reticulum . Cytoplasm, myofibril, sarcomere . Localizes to punctate vesicles when associated with MTM1 (PubMed:12847286). Localizes to triads, a structure formed by a T tubule and two sarcoplasmic reticulum terminal cisterna (By similarity). In skeletal muscles, co-localizes with MTM1 in the sarcomere (By similarity). Partially localizes to the sarcoplasmic reticulum in skeletal muscles (By similarity). .
<b>Expression :</b>	Expressed in skeletal muscles (at protein level) (PubMed:23818870). Ubiquitous with prominent expression in brain, heart, kidney, placenta, and lung (PubMed:11504939).
<b>Sort :</b>	10321
<b>No4 :</b>	1
<b>Host :</b>	Rabbit
<b>Modifications :</b>	Unmodified

## Products Images



Western blot analysis of lysates from HpeG2 cells, primary antibody was diluted at 1:1000, 4° over night



Immunohistochemical analysis of paraffin-embedded human meningioma. 1, Antibody was diluted at 1:200(4° overnight). 2, Tris-EDTA,pH9.0 was used for antigen retrieval. 3,Secondary antibody was diluted at 1:200(room temperature, 45min).