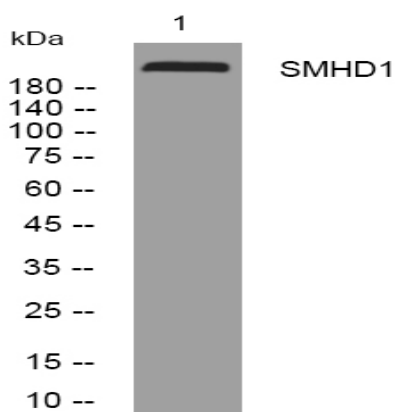


SMHD1 rabbit pAb

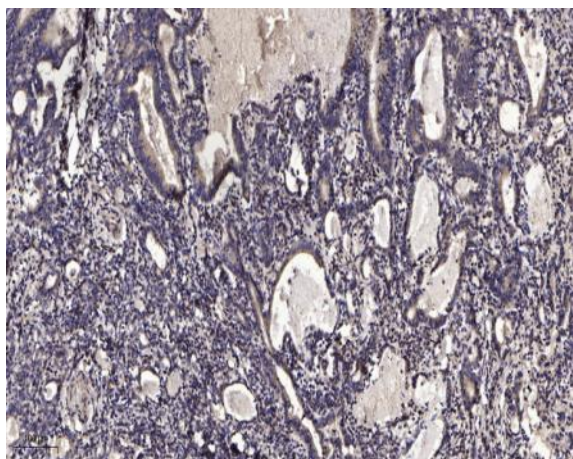
Catalog No :	YT7754
Reactivity :	Human;Mouse
Applications :	WB;IHC
Target :	SMHD1
Gene Name :	SMCHD1 KIAA0650
Protein Name :	SMHD1
Human Gene Id :	23347
Human Swiss Prot No :	A6NHR9
Mouse Gene Id :	74355
Mouse Swiss Prot No :	Q6P5D8
Immunogen :	Synthesized peptide derived from human SMHD1 AA range: 1480-1530
Specificity :	This antibody detects endogenous levels of SMHD1 at Human/Mouse
Formulation :	Liquid in PBS containing 50% glycerol, 0.5% BSA and 0.02% sodium azide.
Source :	Polyclonal, Rabbit,IgG
Dilution :	WB 1:500-2000;IHC 1:50-300
Purification :	The antibody was affinity-purified from rabbit antiserum by affinity-chromatography using epitope-specific immunogen.
Concentration :	1 mg/ml
Storage Stability :	-15°C to -25°C/1 year(Do not lower than -25°C)

Molecularweight : 221kD**Background :** This gene encodes a protein which contains a hinge region domain found in members of the SMC (structural maintenance of chromosomes) protein family. [provided by RefSeq, Dec 2011],**Subcellular Location :** Chromosome . Recruited to inactivated chromosome X in females by Xist RNA (By similarity). Localizes at sites of DNA damage at double-strand breaks (DSBs) (PubMed:25294876, PubMed:24790221).**Sort :** 16446**No4 :** 1**Host :** Rabbit**Modifications :** Unmodified

Products Images



Western blot analysis of lysates from MCF-7 cells, primary antibody was diluted at 1:1000, 4° over night



Immunohistochemical analysis of paraffin-embedded human Gastric adenocarcinoma. 1, Antibody was diluted at 1:200(4° overnight). 2, Tris-EDTA,pH9.0 was used for antigen retrieval. 3,Secondary antibody was diluted at 1:200(room temperature, 45min).