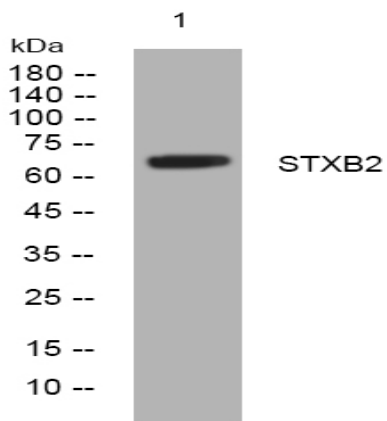


STXB2 rabbit pAb

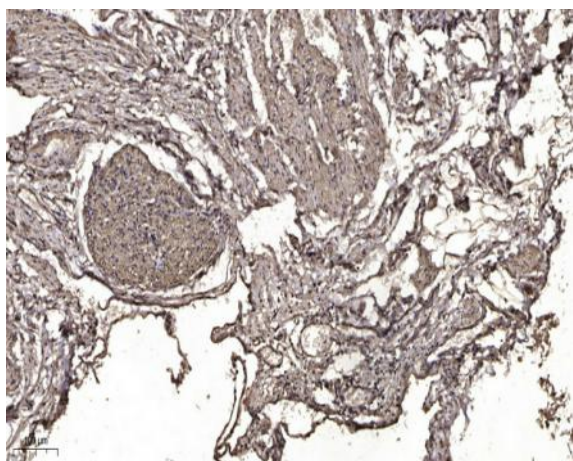
Catalog No :	YT7753
Reactivity :	Human;Mouse;Rat
Applications :	WB;ELISA;IHC
Target :	STXB2
Gene Name :	STXBP2 UNC18B
Protein Name :	STXB2
Human Gene Id :	6813
Human Swiss Prot No :	Q15833
Mouse Gene Id :	20911
Mouse Swiss Prot No :	Q64324
Rat Gene Id :	81804
Rat Swiss Prot No :	Q62753
Immunogen :	Synthesized peptide derived from human STXB2 AA range: 392-442
Specificity :	This antibody detects endogenous levels of STXB2 at Human/Mouse/Rat
Formulation :	Liquid in PBS containing 50% glycerol, 0.5% BSA and 0.02% sodium azide.
Source :	Polyclonal, Rabbit,IgG
Dilution :	WB 1:500-2000;IHC 1:50-300; ELISA 2000-20000
Purification :	The antibody was affinity-purified from rabbit antiserum by affinity-chromatography using epitope-specific immunogen.

Concentration :	1 mg/ml
Storage Stability :	-15°C to -25°C/1 year(Do not lower than -25°C)
Molecularweight :	65kD
Background :	This gene encodes a member of the STXBP/unc-18/SEC1 family. The encoded protein is involved in intracellular trafficking, control of SNARE (soluble NSF attachment protein receptor) complex assembly, and the release of cytotoxic granules by natural killer cells. Mutations in this gene are associated with familial hemophagocytic lymphohistiocytosis. Alternatively spliced transcript variants encoding different isoforms have been noted for this gene. [provided by RefSeq, Jan 2013],
Function :	function:Involved in the protein trafficking from the Golgi apparatus to the plasma membrane.,similarity:Belongs to the STXBP/unc-18/SEC1 family.,subunit:Binds syntaxins 1A, 2, 3 but not 4.,tissue specificity:Placenta, lung, liver, kidney and pancreas, as well as in peripheral blood lymphocytes.,
Subcellular Location :	cytosol,plasma membrane,integral component of membrane,apical plasma membrane,SNARE complex,specific granule,azurophil granule,zymogen granule membrane,cytolytic granule,extracellular exosome,tertiary granule,
Expression :	Placenta, lung, liver, kidney and pancreas, as well as in peripheral blood lymphocytes.
Sort :	16764
No4 :	1
Host :	Rabbit
Modifications :	Unmodified

Products Images



Western blot analysis of lysates from AD293 cells, primary antibody was diluted at 1:1000, 4° over night



Immunohistochemical analysis of paraffin-embedded human oophoroma. 1, Antibody was diluted at 1:200(4° overnight). 2, Tris-EDTA,pH9.0 was used for antigen retrieval. 3,Secondary antibody was diluted at 1:200(room temperature, 45min).