

SKDA1 rabbit pAb

Catalog No :	YT7751
Reactivity :	Human;Mouse
Applications :	WB
Target :	SKDA1
Gene Name :	SKIDA1 C10orf140 DLN1
Protein Name :	SKDA1
Human Gene Id :	387640
Human Swiss Prot No :	Q1XH10
Mouse Gene Id :	72668
Mouse Swiss Prot No :	Q80YR3
Immunogen :	Synthesized peptide derived from human SKDA1 AA range: 714-764
Specificity :	This antibody detects endogenous levels of SKDA1 at Human/Mouse
Formulation :	Liquid in PBS containing 50% glycerol, 0.5% BSA and 0.02% sodium azide.
Source :	Polyclonal, Rabbit,IgG
Dilution :	WB 1:500-2000
Purification :	The antibody was affinity-purified from rabbit antiserum by affinity-chromatography using epitope-specific immunogen.
Concentration :	1 mg/ml
Storage Stability :	-15°C to -25°C/1 year(Do not lower than -25°C)

Molecularweight : 91kD

Function : polymorphism:The poly-Ala region of C10orf140 is highly polymorphic and the number of Ala can vary.,similarity:Belongs to the DACH/dachshund family.,

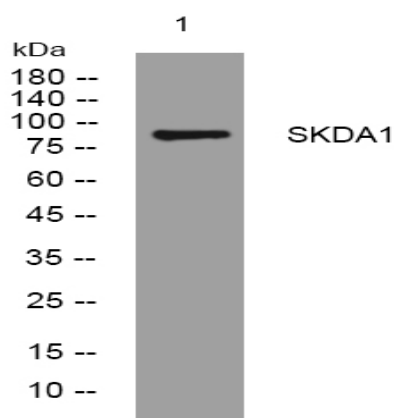
Sort : 16354

No4 : 1

Host : Rabbit

Modifications : Unmodified

Products Images



Western blot analysis of lysates from HpeG2 cells, primary antibody was diluted at 1:1000, 4° over night