

## ATD3C rabbit pAb

<b>Catalog No :</b>	YT7750
<b>Reactivity :</b>	Human
<b>Applications :</b>	WB
<b>Target :</b>	ATD3C
<b>Gene Name :</b>	ATAD3C
<b>Protein Name :</b>	ATD3C
<b>Human Gene Id :</b>	219293
<b>Human Swiss Prot No :</b>	Q5T2N8
<b>Immunogen :</b>	Synthesized peptide derived from human ATD3C AA range: 354-404
<b>Specificity :</b>	This antibody detects endogenous levels of ATD3C at Human
<b>Formulation :</b>	Liquid in PBS containing 50% glycerol, 0.5% BSA and 0.02% sodium azide.
<b>Source :</b>	Polyclonal, Rabbit,IgG
<b>Dilution :</b>	WB 1:500-2000
<b>Purification :</b>	The antibody was affinity-purified from rabbit antiserum by affinity-chromatography using epitope-specific immunogen.
<b>Concentration :</b>	1 mg/ml
<b>Storage Stability :</b>	-15 °C to -25 °C/1 year(Do not lower than -25 °C)
<b>Molecularweight :</b>	45kD
<b>Function :</b>	caution:The sequence shown here is derived from an Ensembl automatic analysis pipeline and should be considered as preliminary data.,sequence caution:Wrong choice of frame.,similarity:Belongs to the AAA ATPase family.,

---

**Sort :** 2350

---

**No4 :** 1

---

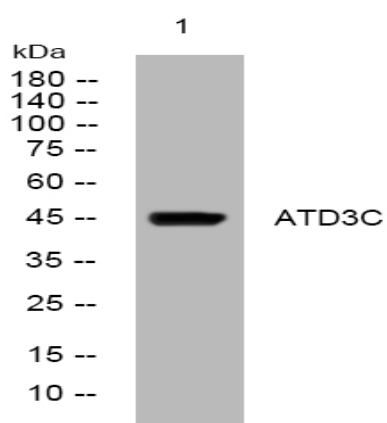
**Host :** Rabbit

---

**Modifications :** Unmodified

---

## Products Images



Western blot analysis of lysates from A431 cells, primary antibody was diluted at 1:1000, 4° over night