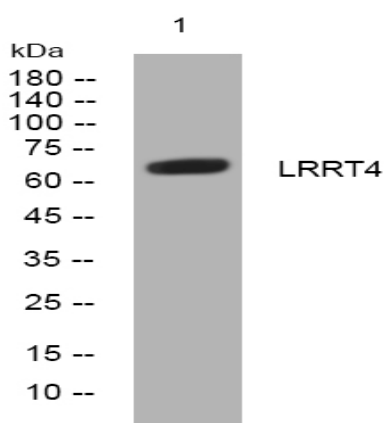


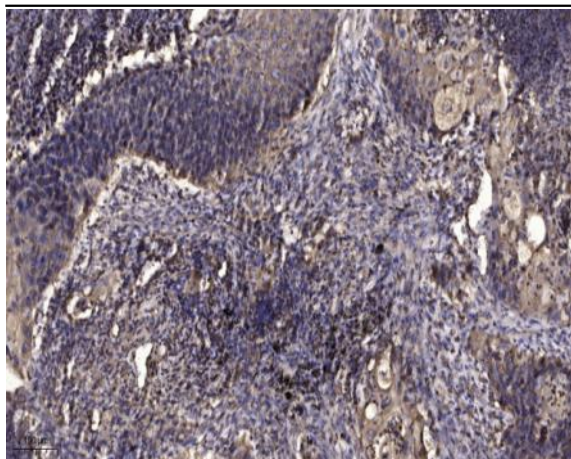
LRRT4 rabbit pAb

Catalog No :	YT7744
Reactivity :	Human;Mouse;Rat
Applications :	WB;ELISA;IHC
Target :	LRRT4
Gene Name :	LRRTM4 UNQ3075/PRO9907
Protein Name :	LRRT4
Human Gene Id :	80059
Human Swiss Prot No :	Q86VH4
Mouse Gene Id :	243499
Mouse Swiss Prot No :	Q80XG9
Rat Gene Id :	500219
Rat Swiss Prot No :	B4F7C5
Immunogen :	Synthesized peptide derived from human LRRT4 AA range: 462-512
Specificity :	This antibody detects endogenous levels of LRRT4 at Human/Mouse/Rat
Formulation :	Liquid in PBS containing 50% glycerol, 0.5% BSA and 0.02% sodium azide.
Source :	Polyclonal, Rabbit,IgG
Dilution :	WB 1:500-2000;IHC 1:50-300; ELISA 2000-20000
Purification :	The antibody was affinity-purified from rabbit antiserum by affinity-chromatography using epitope-specific immunogen.

Concentration :	1 mg/ml
Storage Stability :	-15°C to -25°C/1 year(Do not lower than -25°C)
Molecularweight :	65kD
Function :	function:May play a role in the development and maintenance of the vertebrate nervous system.,similarity:Belongs to the LRRTM family.,similarity:Contains 10 LRR (leucine-rich) repeats.,tissue specificity:Expressed in neuronal tissues.,
Subcellular Location :	Cell membrane ; Single-pass type I membrane protein . Cell junction, synapse, postsynaptic cell membrane ; Single-pass type I membrane protein .
Expression :	Expressed in neuronal tissues.
Sort :	9262
No4 :	1
Host :	Rabbit
Modifications :	Unmodified

Products Images





Immunohistochemical analysis of paraffin-embedded human Squamous cell carcinoma of lung. 1, Antibody was diluted at 1:200(4° overnight). 2, Tris-EDTA,pH9.0 was used for antigen retrieval. 3,Secondary antibody was diluted at 1:200(room temperature, 45min).