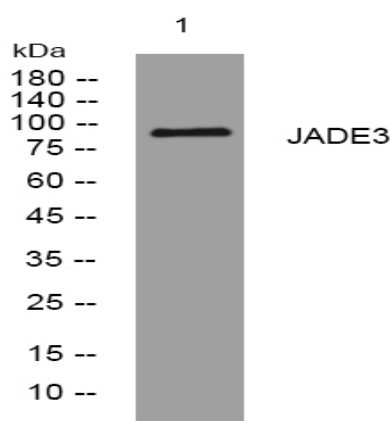


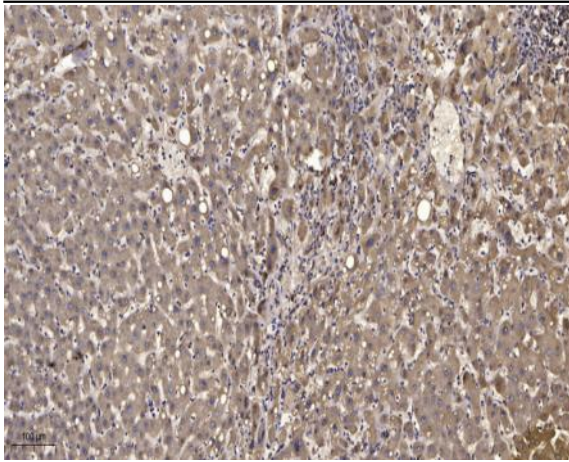
JADE3 rabbit pAb

Catalog No :	YT7743
Reactivity :	Human;Mouse
Applications :	WB;IHC
Target :	JADE3
Gene Name :	PHF16 JADE3 KIAA0215
Protein Name :	JADE3
Human Gene Id :	9767
Human Swiss Prot No :	Q92613
Mouse Gene Id :	382207
Mouse Swiss Prot No :	Q6IE82
Immunogen :	Synthesized peptide derived from human JADE3 AA range: 484-534
Specificity :	This antibody detects endogenous levels of JADE3 at Human/Mouse
Formulation :	Liquid in PBS containing 50% glycerol, 0.5% BSA and 0.02% sodium azide.
Source :	Polyclonal, Rabbit,IgG
Dilution :	WB 1:500-2000;IHC 1:50-300
Purification :	The antibody was affinity-purified from rabbit antiserum by affinity-chromatography using epitope-specific immunogen.
Concentration :	1 mg/ml
Storage Stability :	-15°C to -25°C/1 year(Do not lower than -25°C)

Molecularweight : 91kD**Background :** This gene encodes a member of a family of large proteins containing PHD (plant homeo domain)-type zinc fingers. The encoded protein may be associated in a nuclear complex that functions in histone H4 acetylation. Alternative splicing results in multiple transcript variants encoding the same protein. [provided by RefSeq, Aug 2013],**Function :** function:Component of the HBO1 complex which has a histone H4-specific acetyltransferase activity, a reduced activity toward histone H3 and is responsible for the bulk of histone H4 acetylation in vivo.,induction:By estradiol in estrogen-responsive breast cancer cells.,similarity:Belongs to the JADE family.,similarity:Contains 1 PHD-type zinc finger.,subunit:Component of the HBO1 complex composed at least of ING4 or ING5, MYTS2/HBO1, EAF6, and one of PHF15, PHF16 and PHF17.,tissue specificity:Ubiquitously expressed, with highest levels in placenta and uterus.,**Subcellular Location :** histone acetyltransferase complex,**Expression :** Ubiquitously expressed, with highest levels in placenta and uterus.**Sort :** 8752**No4 :** 1**Host :** Rabbit**Modifications :** Unmodified

Products Images





Immunohistochemical analysis of paraffin-embedded human liver cancer. 1, Antibody was diluted at 1:200(4° overnight). 2, Tris-EDTA,pH9.0 was used for antigen retrieval. 3,Secondary antibody was diluted at 1:200(room temperature, 45min).