

## PSB11 rabbit pAb

|                              |   |
|------------------------------|---|
| <b>Catalog No :</b>          | YT7742  |
| <b>Reactivity :</b>          | Human;Mouse   |
| <b>Applications :</b>        | WB;IHC  |
| <b>Target :</b>              | PSB11   |
| <b>Fields :</b>              | >>Proteasome  |
| <b>Gene Name :</b>           | PSMB11  |
| <b>Protein Name :</b>        | PSB11   |
| <b>Human Gene Id :</b>       | 122706  |
| <b>Human Swiss Prot No :</b> | A5LHX3  |
| <b>Mouse Gene Id :</b>       | 73902   |
| <b>Mouse Swiss Prot No :</b> | Q8BG41  |
| <b>Immunogen :</b>           | Synthesized peptide derived from human PSB11 AA range: 62-112   |
| <b>Specificity :</b>         | This antibody detects endogenous levels of PSB11 at Human/Mouse   |
| <b>Formulation :</b>         | Liquid in PBS containing 50% glycerol, 0.5% BSA and 0.02% sodium azide.   |
| <b>Source :</b>              | Polyclonal, Rabbit,IgG  |
| <b>Dilution :</b>            | WB 1:500-2000;IHC 1:50-300  |
| <b>Purification :</b>        | The antibody was affinity-purified from rabbit antiserum by affinity-chromatography using epitope-specific immunogen. |
| <b>Concentration :</b>       | 1 mg/ml   |

**Storage Stability :** -15°C to -25°C/1 year(Do not lower than -25°C)

**Molecularweight :** 33kD

**Background :** Proteasomes generate peptides that are presented by major histocompatibility complex (MHC) I molecules to other cells of the immune system. Proteolysis is conducted by 20S proteasomes, complexes of 28 subunits arranged as a cylinder in 4 heteroheptameric rings: alpha-1 to -7, beta-1 to -7, beta-1 to -7, and alpha-1 to -7. The catalytic subunits are beta-1 (PSMB6; MIM 600307), beta-2 (PSMB7; MIM 604030), and beta-5 (PSMB5; MIM 600306). Three additional subunits, beta-1i (PSMB9; MIM 177045), beta-2i (PSMB10; MIM 176847), and beta-5i (PSMB8; MIM 177046), are induced by gamma-interferon (IFNG; MIM 147570) and are preferentially incorporated into proteasomes to make immunoproteasomes. PSMB11, or beta-5t, is a catalytic subunit expressed exclusively in cortical thymic epithelial cells (Murata et al., 2007 [PubMed 17540904]).[supplied by OMIM, Mar 2008],

**Function :** catalytic activity: Cleavage of peptide bonds with very broad specificity.,function: The proteasome is a multicatalytic proteinase complex which is characterized by its ability to cleave peptides with Arg, Phe, Tyr, Leu, and Glu adjacent to the leaving group at neutral or slightly basic pH. The proteasome has an ATP-dependent proteolytic activity. PSMB11 plays a pivotal role in development of CD8-positive T cells.,similarity: Belongs to the peptidase T1B family.,subunit: The 26S proteasome consists of a 20S proteasome core and two 19S regulatory subunits. The 20S proteasome core is composed of 28 subunits that are arranged in four stacked rings, resulting in a barrel-shaped structure. The two end rings are each formed by seven alpha subunits, and the two central rings are each formed by seven beta subunits. The catalytic chamber with the active sites is on the inside of the barrel. Incorpora

**Subcellular Location :** Cytoplasm . Nucleus .

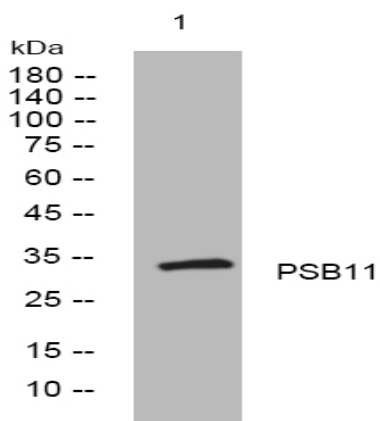
**Sort :** 13106

**No4 :** 1

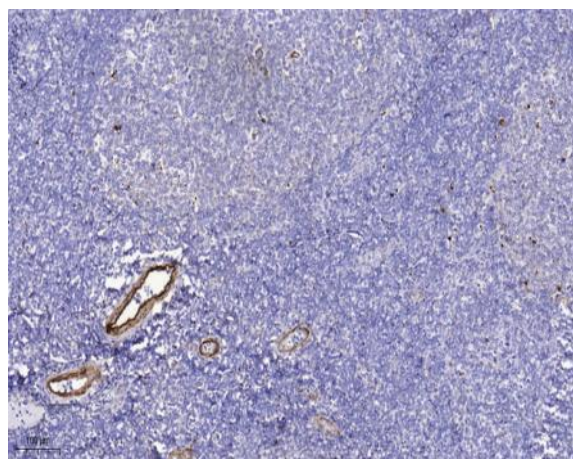
**Host :** Rabbit

**Modifications :** Unmodified

## Products Images



Western blot analysis of lysates from MDA-MB cells, primary antibody was diluted at 1:1000, 4° over night



Immunohistochemical analysis of paraffin-embedded human tonsil. 1, Antibody was diluted at 1:200(4° overnight). 2, Tris-EDTA,pH9.0 was used for antigen retrieval. 3,Secondary antibody was diluted at 1:200(room temperature, 45min).