

HACL1 rabbit pAb

| | |
|------------------------------|---|
| Catalog No : | YT7740 |
| Reactivity : | Human;Mouse;Rat |
| Applications : | WB |
| Target : | HACL1 |
| Fields : | >>Peroxisome |
| Gene Name : | HACL1 HPCL HPCL2 PHYH2 HSPC279 |
| Protein Name : | HACL1 |
| Human Gene Id : | 26061 |
| Human Swiss Prot No : | Q9UJ83 |
| Mouse Gene Id : | 56794 |
| Mouse Swiss Prot No : | Q9QXE0 |
| Rat Gene Id : | 85255 |
| Rat Swiss Prot No : | Q8CHM7 |
| Immunogen : | Synthesized peptide derived from human HACL1 AA range: 323-373 |
| Specificity : | This antibody detects endogenous levels of HACL1 at Human/Mouse/Rat |
| Formulation : | Liquid in PBS containing 50% glycerol, 0.5% BSA and 0.02% sodium azide. |
| Source : | Polyclonal, Rabbit,IgG |
| Dilution : | WB 1[?]500-2000 |
| Purification : | The antibody was affinity-purified from rabbit antiserum by affinity- |

chromatography using epitope-specific immunogen.

Concentration : 1 mg/ml

Storage Stability : -15°C to -25°C/1 year(Do not lower than -25°C)

Molecularweight : 64kD

Function : catalytic activity:2-hydroxyphytanoyl-CoA = pristanal + formyl-CoA.,cofactor: Binds 1 magnesium ion per subunit.,cofactor: Binds 1 thiamine pyrophosphate per subunit.,function: Catalyzes a carbon-carbon cleavage reaction; cleaves a 2-hydroxy-3-methylacyl-CoA into formyl-CoA and a 2-methyl-branched fatty aldehyde.,pathway: Lipid metabolism; fatty acid metabolism.,similarity: Belongs to the TPP enzyme family.,subunit: Homotetramer.,tissue specificity: Expressed in high levels in liver, also expressed in kidney, heart and skeletal muscle.,

Subcellular Location : Peroxisome .

Expression : Widely expressed.

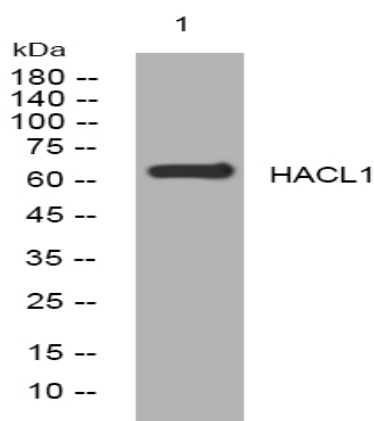
Sort : 7218

No4 : 1

Host : Rabbit

Modifications : Unmodified

Products Images



Western blot analysis of lysates from U2OS cells, primary antibody was diluted at 1:1000, 4° over night