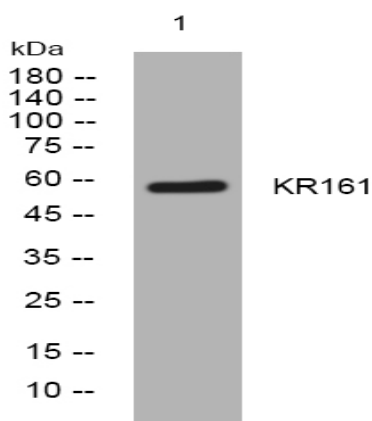


KR161 rabbit pAb

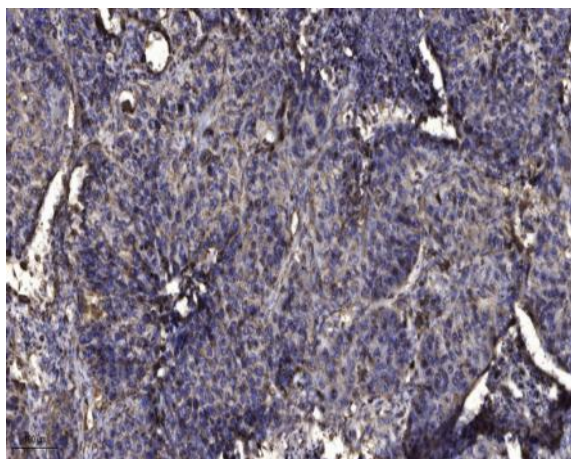
Catalog No :	YT7739
Reactivity :	Human;Mouse
Applications :	WB;IHC
Target :	KR161
Gene Name :	KRTAP16-1 KAP16.1
Protein Name :	KR161
Human Gene Id :	100505753
Human Swiss Prot No :	A8MUX0
Mouse Gene Id :	100504183
Mouse Swiss Prot No :	A2A5X5
Immunogen :	Synthesized peptide derived from human KR161 AA range: 19-69
Specificity :	This antibody detects endogenous levels of KR161 at Human/Mouse
Formulation :	Liquid in PBS containing 50% glycerol, 0.5% BSA and 0.02% sodium azide.
Source :	Polyclonal, Rabbit,IgG
Dilution :	WB 1:500-2000;IHC 1:50-300
Purification :	The antibody was affinity-purified from rabbit antiserum by affinity-chromatography using epitope-specific immunogen.
Concentration :	1 mg/ml
Storage Stability :	-15°C to -25°C/1 year(Do not lower than -25°C)

Molecularweight :	57kD
Subcellular Location :	keratin filament,
Sort :	8990
No4 :	1
Host :	Rabbit
Modifications :	Unmodified

Products Images



Western blot analysis of lysates from HEK293 cells, primary antibody was diluted at 1:1000, 4° over night



Immunohistochemical analysis of paraffin-embedded human Squamous cell carcinoma of lung. 1, Antibody was diluted at 1:200(4° overnight). 2, Tris-EDTA,pH9.0 was used for antigen retrieval. 3,Secondary antibody was diluted at 1:200(room temperature, 45min).