

## KR106 rabbit pAb

<b>Catalog No :</b>	YT7738
<b>Reactivity :</b>	Human
<b>Applications :</b>	WB;ELISA;IHC
<b>Target :</b>	KR106
<b>Gene Name :</b>	KRTAP10-6 KAP10.6 KAP18-6 KRTAP10.6 KRTAP18-6 KRTAP18.6
<b>Protein Name :</b>	KR106
<b>Human Gene Id :</b>	386674
<b>Human Swiss Prot No :</b>	P60371
<b>Immunogen :</b>	Synthesized peptide derived from human KR106 AA range: 303-353
<b>Specificity :</b>	This antibody detects endogenous levels of KR106 at Human
<b>Formulation :</b>	Liquid in PBS containing 50% glycerol, 0.5% BSA and 0.02% sodium azide.
<b>Source :</b>	Polyclonal, Rabbit,IgG
<b>Dilution :</b>	WB 1:500-2000;IHC 1:50-300; ELISA 2000-20000
<b>Purification :</b>	The antibody was affinity-purified from rabbit antiserum by affinity-chromatography using epitope-specific immunogen.
<b>Concentration :</b>	1 mg/ml
<b>Storage Stability :</b>	-15°C to -25°C/1 year(Do not lower than -25°C)
<b>Molecularweight :</b>	40kD
<b>Function :</b>	function:In the hair cortex, hair keratin intermediate filaments are embedded in an interfilamentous matrix, consisting of hair keratin-associated proteins (KRTAP), which are essential for the formation of a rigid and resistant hair shaft

through their extensive disulfide bond cross-linking with abundant cysteine residues of hair keratins. The matrix proteins include the high-sulfur and high-glycine-tyrosine keratins.,similarity:Belongs to the KRTAP type 10 family.,subunit:Interacts with hair keratins.,tissue specificity:Restricted to a narrow region of the hair fiber cuticle, lying approximately 20 cell layers above the apex of the dermal papilla of the hair root; not detected in any other tissues.,

**Subcellular Location :**

keratin filament,

**Expression :**

Restricted to a narrow region of the hair fiber cuticle, lying approximately 20 cell layers above the apex of the dermal papilla of the hair root; not detected in any other tissues.

**Sort :**

8986

**No4 :**

1

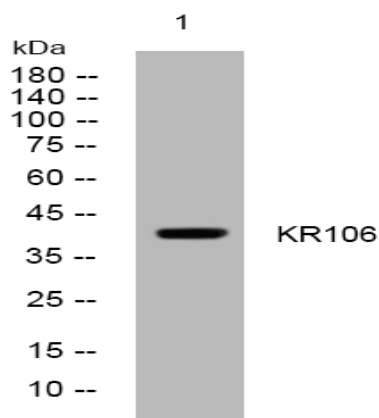
**Host :**

Rabbit

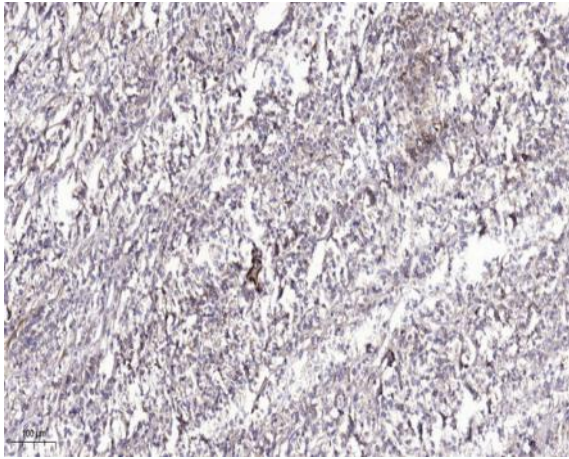
**Modifications :**

Unmodified

## Products Images



Western blot analysis of lysates from MCF-7 cells, primary antibody was diluted at 1:1000, 4° over night



Immunohistochemical analysis of paraffin-embedded human Colon cancer. 1, Antibody was diluted at 1:200(4° overnight). 2, Tris-EDTA,pH9.0 was used for antigen retrieval. 3,Secondary antibody was diluted at 1:200(room temperature, 45min).