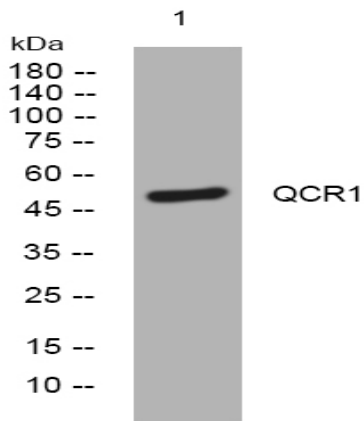


QCR1 rabbit pAb

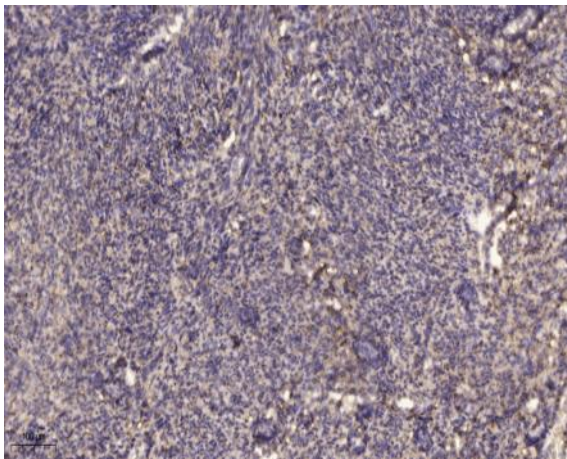
Catalog No :	YT7734
Reactivity :	Human;Mouse;Rat
Applications :	WB;ELISA;IHC
Target :	QCR1
Fields :	>>Oxidative phosphorylation;>>Metabolic pathways;>>Cardiac muscle contraction;>>Thermogenesis;>>Non-alcoholic fatty liver disease;>>Alzheimer disease;>>Parkinson disease;>>Amyotrophic lateral sclerosis;>>Huntington disease;>>Prion disease;>>Pathways of neurodegeneration - multiple diseases;>>Chemical carcinogenesis - reactive oxygen species;>>Diabetic cardiomyopathy
Gene Name :	UQCRC1
Protein Name :	QCR1
Human Gene Id :	7384
Human Swiss Prot No :	P31930
Mouse Gene Id :	22273
Mouse Swiss Prot No :	Q9CZ13
Rat Gene Id :	301011
Rat Swiss Prot No :	Q68FY0
Immunogen :	Synthesized peptide derived from human QCR1 AA range: 164-214
Specificity :	This antibody detects endogenous levels of QCR1 at Human/Mouse/Rat
Formulation :	Liquid in PBS containing 50% glycerol, 0.5% BSA and 0.02% sodium azide.
Source :	Polyclonal, Rabbit,IgG

Dilution :	WB 1:500-2000;IHC 1:50-300; ELISA 2000-20000
Purification :	The antibody was affinity-purified from rabbit antiserum by affinity-chromatography using epitope-specific immunogen.
Concentration :	1 mg/ml
Storage Stability :	-15°C to -25°C/1 year(Do not lower than -25°C)
Molecularweight :	53kD
Function :	caution:Does not seem to have a protease activity as it lack the zinc-binding site.,function:This is a component of the ubiquinol-cytochrome c reductase complex (complex III or cytochrome b-c1 complex), which is part of the mitochondrial respiratory chain. This protein may mediate formation of the complex between cytochromes c and c1.,similarity:Belongs to the peptidase M16 family. UQCRC1/QCR1 subfamily.,subunit:The bc1 complex contains 11 subunits: 3 respiratory subunits (cytochrome b, cytochrome c1 and Rieske/UQCRFS1), 2 core proteins (UQCRC1/QCR1 and UQCRC2/QCR2) and 6 low-molecular weight proteins (UQCRH/QCR6, UQCRB/QCR7, UQCRQ/QCR8, UQCR10/QCR9, UQCR11/QCR10 and a cleavage product of Rieske/UQCRFS1).,
Subcellular Location :	Mitochondrion inner membrane ; Peripheral membrane protein ; Matrix side .
Expression :	Expressed in brain, including substantia nigra, striatum, cortex and cerebellum, and in spinal cord, heart, kidney, liver and muscle.
Sort :	13198
No4 :	1
Host :	Rabbit
Modifications :	Unmodified

Products Images



Western blot analysis of lysates from 293T cells, primary antibody was diluted at 1:1000, 4° over night



Immunohistochemical analysis of paraffin-embedded human uterus. 1, Antibody was diluted at 1:200(4° overnight). 2, Tris-EDTA,pH9.0 was used for antigen retrieval. 3,Secondary antibody was diluted at 1:200(room temperature, 45min).