

PRR12 rabbit pAb

Catalog No :	YT7725
Reactivity :	Human;Mouse
Applications :	WB;IHC
Target :	PRR12
Gene Name :	PRR12 KIAA1205
Protein Name :	PRR12
Human Gene Id :	57479
Human Swiss Prot No :	Q9ULL5
Immunogen :	Synthesized peptide derived from human PRR12 AA range: 1079-1129
Specificity :	This antibody detects endogenous levels of PRR12 at Human
Formulation :	Liquid in PBS containing 50% glycerol, 0.5% BSA and 0.02% sodium azide.
Source :	Polyclonal, Rabbit,IgG
Dilution :	WB 1:500-2000;IHC 1:50-300
Purification :	The antibody was affinity-purified from rabbit antiserum by affinity-chromatography using epitope-specific immunogen.
Concentration :	1 mg/ml
Storage Stability :	-15°C to -25°C/1 year(Do not lower than -25°C)
Molecularweight :	134kD
Background :	This gene encodes a proline-rich protein that contains two A-T hook DNA binding domains. A chromosomal translocation and gene fusion between this gene and zinc finger, MIZ-type containing 1 (Gene ID: 57178) may underlie

intellectual disability and neuropsychiatric problems in a human patient. Enriched expression of this gene in embryonic mouse brain suggests that this gene may play a role in nervous system development. [provided by RefSeq, Jul 2016],

Function :

similarity:Contains 2 A.T hook DNA-binding domains.,

Subcellular Location :

Nucleus . Cell junction, synapse, postsynaptic density . Cell junction, synapse, synaptosome .

Sort :

13083

No4 :

1

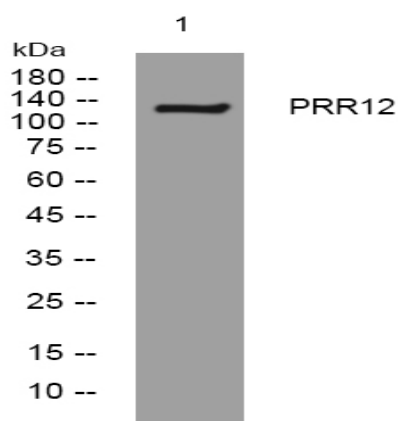
Host :

Rabbit

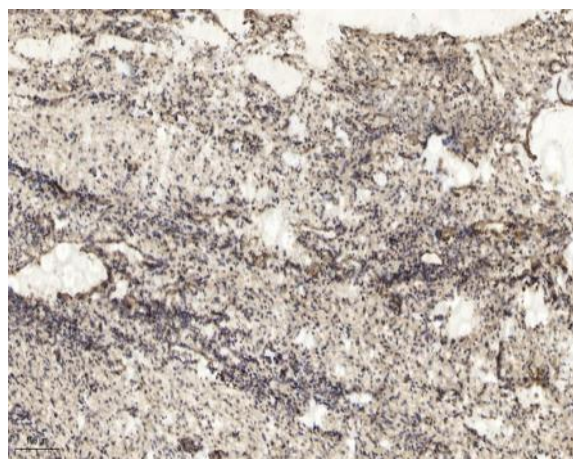
Modifications :

Unmodified

Products Images



Western blot analysis of lysates from K562 cells, primary antibody was diluted at 1:1000, 4° over night



Immunohistochemical analysis of paraffin-embedded human oophoroma. 1, Antibody was diluted at 1:200(4° overnight). 2, Tris-EDTA,pH9.0 was used for antigen retrieval. 3,Secondary antibody was diluted at 1:200(room temperature, 45min).