

FAN1 rabbit pAb

| | |
|------------------------------|---|
| Catalog No : | YT7724 |
| Reactivity : | Human;Mouse |
| Applications : | WB |
| Target : | FAN1 |
| Fields : | >>Fanconi anemia pathway |
| Gene Name : | FAN1 KIAA1018 MTMR15 |
| Protein Name : | FAN1 |
| Human Gene Id : | 22909 |
| Human Swiss Prot No : | Q9Y2M0 |
| Mouse Gene Id : | 330554 |
| Mouse Swiss Prot No : | Q69ZT1 |
| Immunogen : | Synthesized peptide derived from human FAN1 AA range: 801-851 |
| Specificity : | This antibody detects endogenous levels of FAN1 at Human/Mouse |
| Formulation : | Liquid in PBS containing 50% glycerol, 0.5% BSA and 0.02% sodium azide. |
| Source : | Polyclonal, Rabbit,IgG |
| Dilution : | WB 1[?]500-2000 |
| Purification : | The antibody was affinity-purified from rabbit antiserum by affinity-chromatography using epitope-specific immunogen. |
| Concentration : | 1 mg/ml |

Storage Stability : -15°C to -25°C/1 year(Do not lower than -25°C)

Molecularweight : 112kD

Background : This gene plays a role in DNA interstrand cross-link repair and encodes a protein with 5' flap endonuclease and 3' exonuclease activity. Mutations in this gene cause karyomegalic interstitial nephritis. Alternatively spliced transcript variants encoding distinct isoforms have been described. [provided by RefSeq, Feb 2016],

Function : similarity:Belongs to the MTMR15 family.,

Subcellular Location : Nucleus . Localizes at sites of DNA damage following recruitment by monoubiquitinated FANCD2 (PubMed:20603015, PubMed:20603016). Localizes to stalled replication forks via its UBZ4-type zinc finger (PubMed:20935496). .

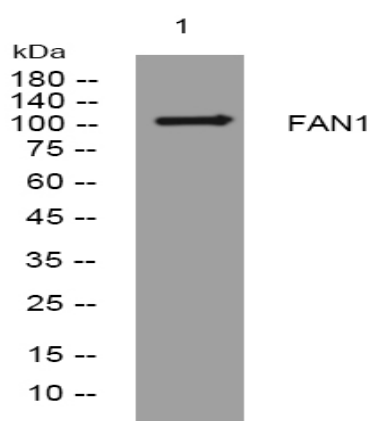
Sort : 5938

No4 : 1

Host : Rabbit

Modifications : Unmodified

Products Images



Western blot analysis of lysates from HeLa cells, primary antibody was diluted at 1:1000, 4°C over night