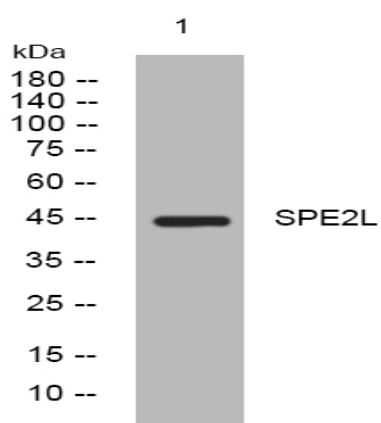


SPE2L rabbit pAb

Catalog No :	YT7717
Reactivity :	Human
Applications :	WB
Target :	SPE2L
Fields :	>>Oocyte meiosis;>>Progesterone-mediated oocyte maturation
Gene Name :	SPDYE2L
Protein Name :	SPE2L
Human Gene Id :	100310812
Human Swiss Prot No :	A6NHP3
Immunogen :	Synthesized peptide derived from human SPE2L AA range: 52-102
Specificity :	This antibody detects endogenous levels of SPE2L at Human
Formulation :	Liquid in PBS containing 50% glycerol, 0.5% BSA and 0.02% sodium azide.
Source :	Polyclonal, Rabbit,IgG
Dilution :	WB 1[?]500-2000
Purification :	The antibody was affinity-purified from rabbit antiserum by affinity-chromatography using epitope-specific immunogen.
Concentration :	1 mg/ml
Storage Stability :	-15°C to -25°C/1 year(Do not lower than -25°C)
Molecularweight :	44kD

Sort :	<u>16544</u>
No4 :	<u>1</u>
Host :	<u>Rabbit</u>
Modifications :	<u>Unmodified</u>

Products Images



Western blot analysis of lysates from HeLa cells, primary antibody was diluted at 1:1000, 4° over night