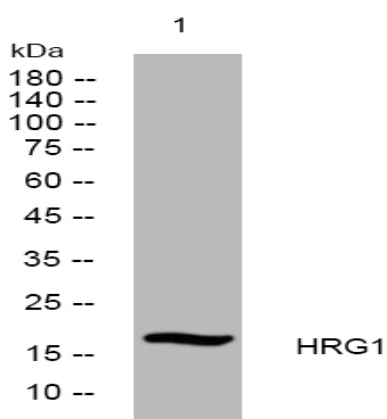


HRG1 rabbit pAb

Catalog No :	YT7710
Reactivity :	Human;Mouse;Rat
Applications :	WB
Target :	HRG1
Gene Name :	SLC48A1 HRG1
Protein Name :	HRG1
Human Gene Id :	55652
Human Swiss Prot No :	Q6P1K1
Mouse Gene Id :	67739
Mouse Swiss Prot No :	Q9D8M3
Rat Gene Id :	300191
Rat Swiss Prot No :	B0BNL4
Immunogen :	Synthesized peptide derived from human HRG1 AA range: 28-78
Specificity :	This antibody detects endogenous levels of HRG1 at Human/Mouse/Rat
Formulation :	Liquid in PBS containing 50% glycerol, 0.5% BSA and 0.02% sodium azide.
Source :	Polyclonal, Rabbit,IgG
Dilution :	WB 1:500-2000
Purification :	The antibody was affinity-purified from rabbit antiserum by affinity-chromatography using epitope-specific immunogen.

Concentration :	1 mg/ml
Storage Stability :	-15°C to -25°C/1 year(Do not lower than -25°C)
Molecularweight :	16kD
Function :	function:Heme transporter that regulates intracellular heme availability through the endosomal or lysosomal compartment.,sequence caution:Wrong choice of CDS.,similarity:Belongs to the HRG family.,tissue specificity:highly expressed in the brain, kidney, heart and skeletal muscle. Moderately expressed in the liver, lung, placenta and small intestine.,
Subcellular Location :	Endosome membrane ; Multi-pass membrane protein . Lysosome membrane ; Multi-pass membrane protein .
Expression :	Highly expressed in the brain, kidney, heart and skeletal muscle. Moderately expressed in the liver, lung, placenta and small intestine.
Sort :	7779
No4 :	1
Host :	Rabbit
Modifications :	Unmodified

Products Images



Western blot analysis of lysates from KB cells, primary antibody was diluted at 1:1000, 4° over night