

## SYFM rabbit pAb

<b>Catalog No :</b>	YT7709
<b>Reactivity :</b>	Human;Mouse;Rat
<b>Applications :</b>	WB;ELISA;IHC
<b>Target :</b>	SYFM
<b>Fields :</b>	>>Aminoacyl-tRNA biosynthesis
<b>Gene Name :</b>	FARS2 FARS1 HSPC320
<b>Protein Name :</b>	SYFM
<b>Human Gene Id :</b>	10667
<b>Human Swiss Prot No :</b>	O95363
<b>Mouse Gene Id :</b>	69955
<b>Mouse Swiss Prot No :</b>	Q99M01
<b>Rat Gene Id :</b>	306879
<b>Rat Swiss Prot No :</b>	Q6AYQ3
<b>Immunogen :</b>	Synthesized peptide derived from human SYFM AA range: 294-344
<b>Specificity :</b>	This antibody detects endogenous levels of SYFM at Human/Mouse/Rat
<b>Formulation :</b>	Liquid in PBS containing 50% glycerol, 0.5% BSA and 0.02% sodium azide.
<b>Source :</b>	Polyclonal, Rabbit,IgG
<b>Dilution :</b>	WB 1:500-2000;IHC 1:50-300; ELISA 2000-20000
<b>Purification :</b>	The antibody was affinity-purified from rabbit antiserum by affinity-

chromatography using epitope-specific immunogen.

**Concentration :** 1 mg/ml

**Storage Stability :** -15°C to -25°C/1 year(Do not lower than -25°C)

**Molecularweight :** 50kD

**Background :** This gene encodes a protein that transfers phenylalanine to its cognate tRNA. This protein localizes to the mitochondrion and plays a role in mitochondrial protein translation. Mutations in this gene can cause combined oxidative phosphorylation deficiency 14 (Alpers encephalopathy). Alternative splicing results in multiple transcript variants. [provided by RefSeq, Jan 2016],

**Function :** catalytic activity:ATP + L-phenylalanine + tRNA(Phe) = AMP + diphosphate + L-phenylalanyl-tRNA(Phe).,similarity:Belongs to the class-II aminoacyl-tRNA synthetase family.,similarity:Contains 1 FDX-ACB domain.,subunit:Monomer.,

**Subcellular Location :** Mitochondrion matrix . Mitochondrion .

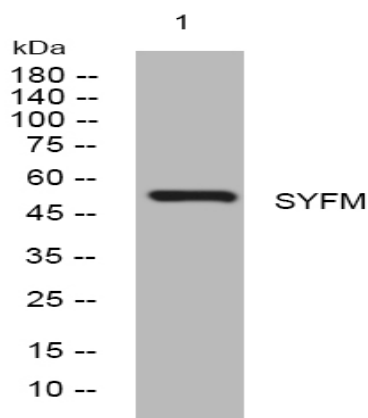
**Sort :** 16788

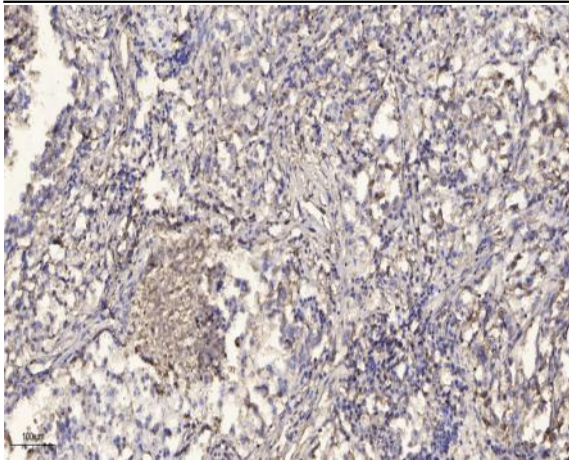
**No4 :** 1

**Host :** Rabbit

**Modifications :** Unmodified

## Products Images





Immunohistochemical analysis of paraffin-embedded human Squamous cell carcinoma of lung. 1, Antibody was diluted at 1:200(4° overnight). 2, Tris-EDTA,pH9.0 was used for antigen retrieval. 3,Secondary antibody was diluted at 1:200(room temperature, 45min).