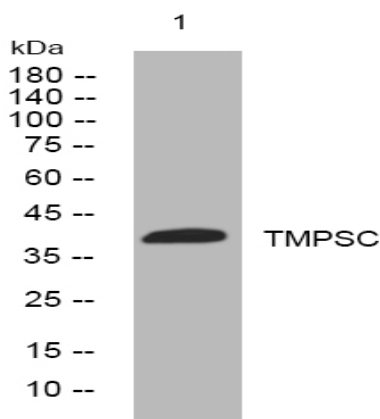


TMPSC rabbit pAb

Catalog No :	YT7706
Reactivity :	Human;Mouse
Applications :	WB
Target :	TMPSC
Gene Name :	TMPRSS12
Protein Name :	TMPSC
Human Gene Id :	283471
Human Swiss Prot No :	Q86WS5
Mouse Gene Id :	75002
Mouse Swiss Prot No :	Q3V0Q7
Immunogen :	Synthesized peptide derived from human TMPSC AA range: 185-235
Specificity :	This antibody detects endogenous levels of TMPSC at Human/Mouse
Formulation :	Liquid in PBS containing 50% glycerol, 0.5% BSA and 0.02% sodium azide.
Source :	Polyclonal, Rabbit,IgG
Dilution :	WB 1:500-2000
Purification :	The antibody was affinity-purified from rabbit antiserum by affinity-chromatography using epitope-specific immunogen.
Concentration :	1 mg/ml
Storage Stability :	-15°C to -25°C/1 year(Do not lower than -25°C)

Molecularweight :	38kD
Function :	similarity:Belongs to the peptidase S1 family.,similarity:Contains 1 peptidase S1 domain.,
Subcellular Location :	Membrane ; Single-pass membrane protein .
Expression :	In testis, expressed in spermatocytes and spermatids. Expressed in colorectal cancer (at protein level).
Sort :	17247
No4 :	1
Host :	Rabbit
Modifications :	Unmodified

Products Images



Western blot analysis of lysates from A549 cells, primary antibody was diluted at 1:1000, 4° over night