

## RN213 rabbit pAb

<b>Catalog No :</b>	YT7705
<b>Reactivity :</b>	Human;Mouse
<b>Applications :</b>	IHC;IF
<b>Target :</b>	RN213
<b>Gene Name :</b>	RNF213 ALO17 C17orf27 KIAA1554 KIAA1618 MYSTR
<b>Protein Name :</b>	RN213
<b>Human Gene Id :</b>	57674
<b>Human Swiss Prot No :</b>	Q63HN8
<b>Mouse Swiss Prot No :</b>	E9Q555
<b>Immunogen :</b>	Synthesized peptide derived from human RN213. AA range:307-407
<b>Specificity :</b>	This antibody detects endogenous levels of RN213 at Human/Mouse
<b>Formulation :</b>	Liquid in PBS containing 50% glycerol, 0.5% BSA and 0.02% sodium azide.
<b>Source :</b>	Polyclonal, Rabbit,IgG
<b>Dilution :</b>	IHC 1:50-200. IF 1:50-200
<b>Purification :</b>	The antibody was affinity-purified from rabbit antiserum by affinity-chromatography using epitope-specific immunogen.
<b>Concentration :</b>	1 mg/ml
<b>Storage Stability :</b>	-15°C to -25°C/1 year(Do not lower than -25°C)
<b>Molecularweight :</b>	573kD

**Background :** This gene encodes a protein containing a C3HC4-type RING finger domain, which is a specialized type of Zn-finger that binds two atoms of zinc and is thought to be involved in mediating protein-protein interactions. The protein also contains an AAA domain, which is associated with ATPase activity. This gene is a susceptibility gene for Moyamoya disease, a vascular disorder of intracranial arteries. This gene is also a translocation partner in anaplastic large cell lymphoma and inflammatory myofibroblastic tumor cases, where a t(2;17)(p23;q25) translocation has been identified with the anaplastic lymphoma kinase (ALK) gene on chromosome 2, and a t(8;17)(q24;q25) translocation has been identified with the MYC gene on chromosome 8. Alternative splicing results in multiple transcript variants. [provided by RefSeq, Dec 2011],

**Function :** disease:A chromosomal aberration involving ALO17 is associated with anaplastic large-cell lymphoma (ALCL). Translocation t(2;17)(p23;q25) with ALK.,sequence caution:Translated as Gln.,similarity:Contains 1 RING-type zinc finger.,

**Subcellular Location :** Cytoplasm, cytosol . Lipid droplet .

**Expression :** Widely expressed (at protein level). ; [Isoform 1]: Major isoform detected in all tissues examined. ; [Isoform 2]: Minor isoform with restricted expression.

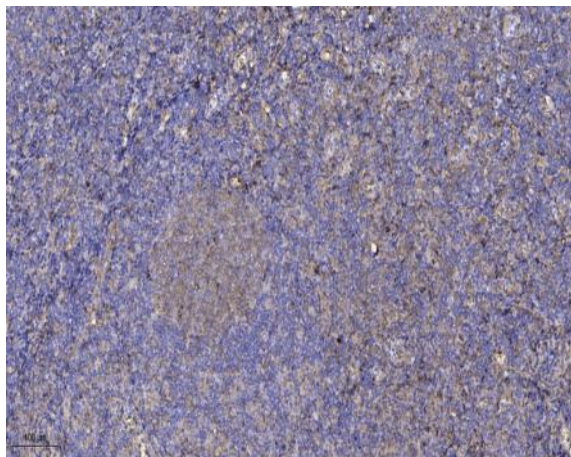
**Sort :** 14549

**No4 :** 1

**Host :** Rabbit

**Modifications :** Unmodified

## Products Images



Immunohistochemical analysis of paraffin-embedded human tonsil. 1, Antibody was diluted at 1:200(4° overnight). 2, Tris-EDTA,pH9.0 was used for antigen retrieval. 3,Secondary antibody was diluted at 1:200(room temperature, 30min).