

PA2GC rabbit pAb

Catalog No :	YT7702
Reactivity :	Human;Mouse;Rat
Applications :	WB
Target :	PA2GC
Fields :	>>Glycerophospholipid metabolism;>>Ether lipid metabolism;>>Arachidonic acid metabolism;>>Linoleic acid metabolism;>>alpha-Linolenic acid metabolism;>>Metabolic pathways;>>Ras signaling pathway;>>Vascular smooth muscle contraction;>>Pancreatic secretion;>>Fat digestion and absorption
Gene Name :	PLA2G2C
Protein Name :	PA2GC
Human Swiss Prot No :	Q5R387
Mouse Gene Id :	18781
Mouse Swiss Prot No :	P48076
Rat Gene Id :	29387
Rat Swiss Prot No :	P39878
Immunogen :	Synthesized peptide derived from human PA2GC AA range: 44-94
Specificity :	This antibody detects endogenous levels of PA2GC at Human/Mouse/Rat
Formulation :	Liquid in PBS containing 50% glycerol, 0.5% BSA and 0.02% sodium azide.
Source :	Polyclonal, Rabbit,IgG
Dilution :	WB 1[?]500-2000
Purification :	The antibody was affinity-purified from rabbit antiserum by affinity-

chromatography using epitope-specific immunogen.

Concentration : 1 mg/ml

Storage Stability : -15°C to -25°C/1 year(Do not lower than -25°C)

Molecularweight : 16kD

Function : caution:Could be the product of a pseudogene. Lacks the typical His active site in position 68 that is replaced by a Ser residue, preventing the hydrolase activity.,cofactor: Binds 1 calcium ion per subunit.,function:Inactive phospholipase.,similarity:Belongs to the phospholipase A2 family.,

Subcellular Location : Secreted .

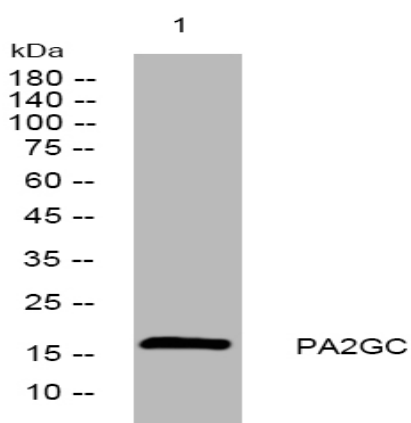
Sort : 11564

No4 : 1

Host : Rabbit

Modifications : Unmodified

Products Images



Western blot analysis of lysates from HeLa cells, primary antibody was diluted at 1:1000, 4° over night